

ARCHITECTURE

PORTFOLIO

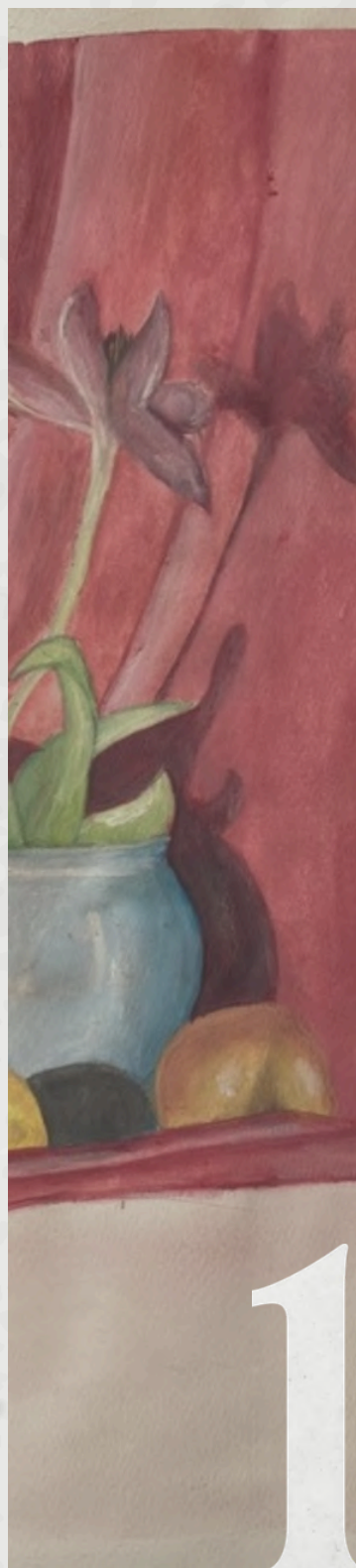
Azra Tuna

aazratuna@gmail.com

Pecs University

Architectural Engineering BSc

CONTENTS



1

Hand Drawings

1.



2

Lake House Project

5.



3

Physical Model
Task

7.



4

Technical Drawings

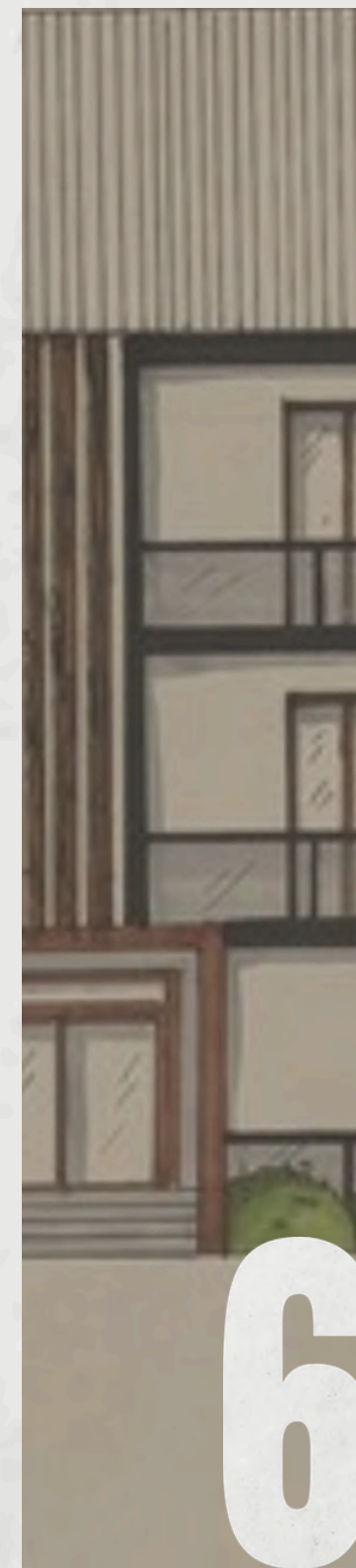
9.



5

Pavilion Project

11.



6

Apartment Building
Project

14.

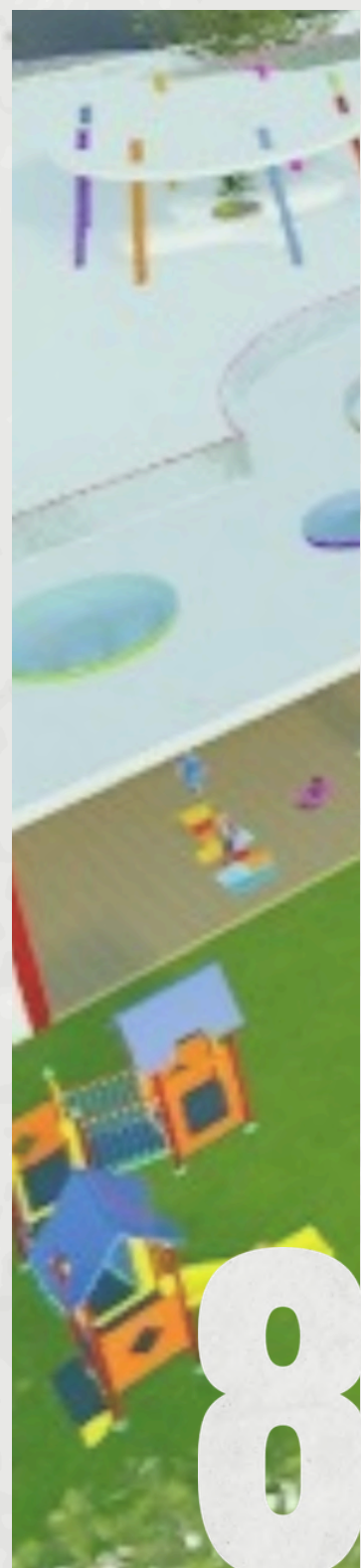


7

Sketches

16.

CONTENTS



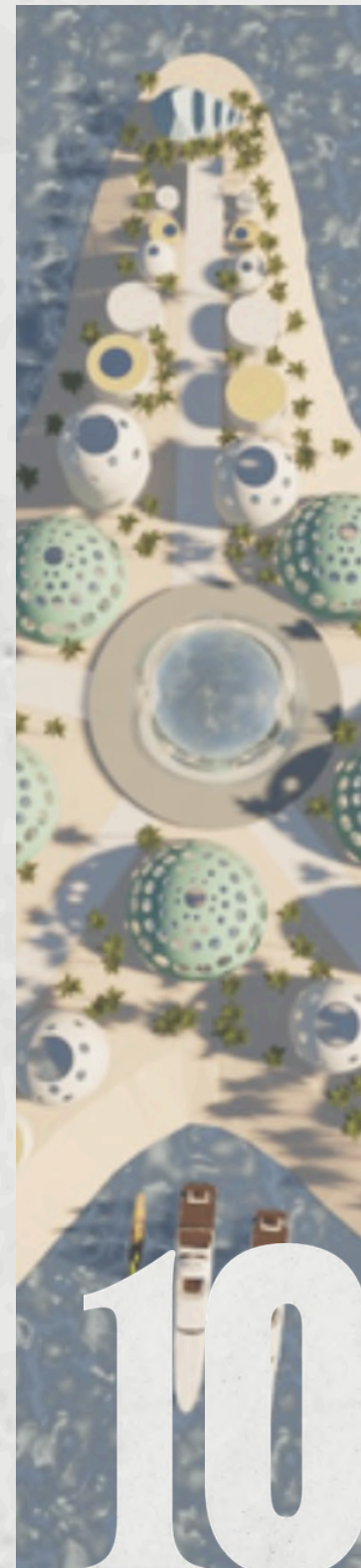
8

Kindergarten
Project
19.



9

Ivyria - Oxpou
Pavilion
21.



10

Land Creation
23.



11

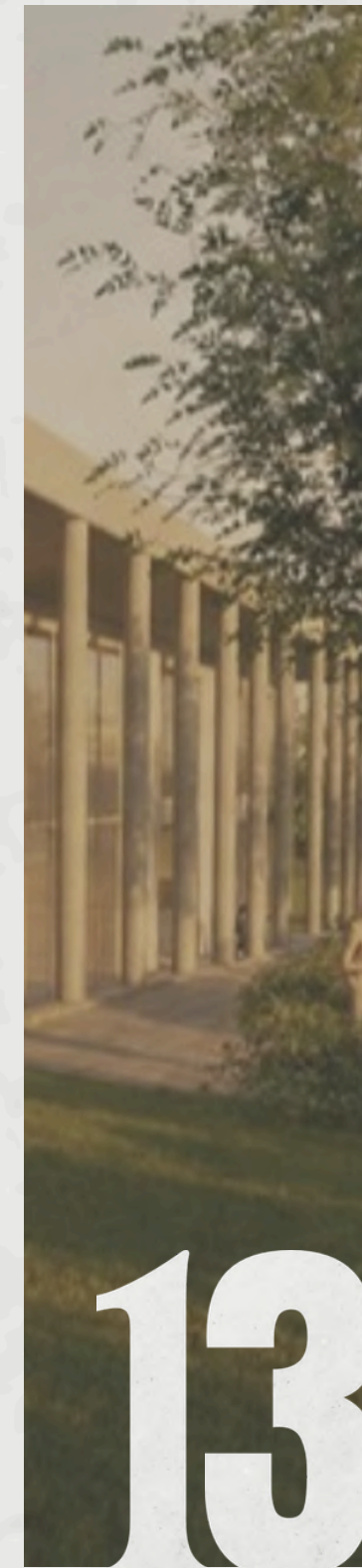
Civic Center
25.



*Bold, layered,
colorful, eclectic mix
of patterns and
textures.*

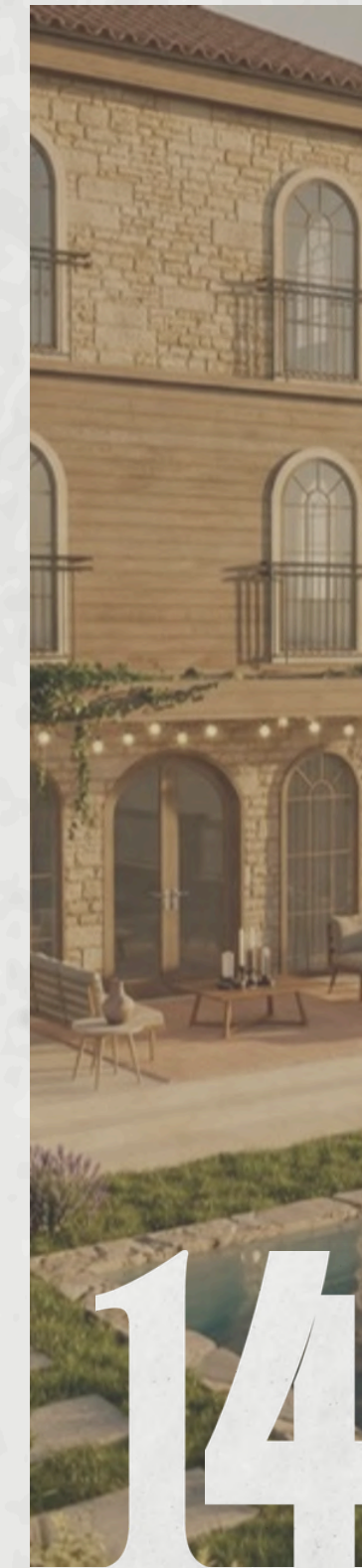
12

Individual Posters
27.



13

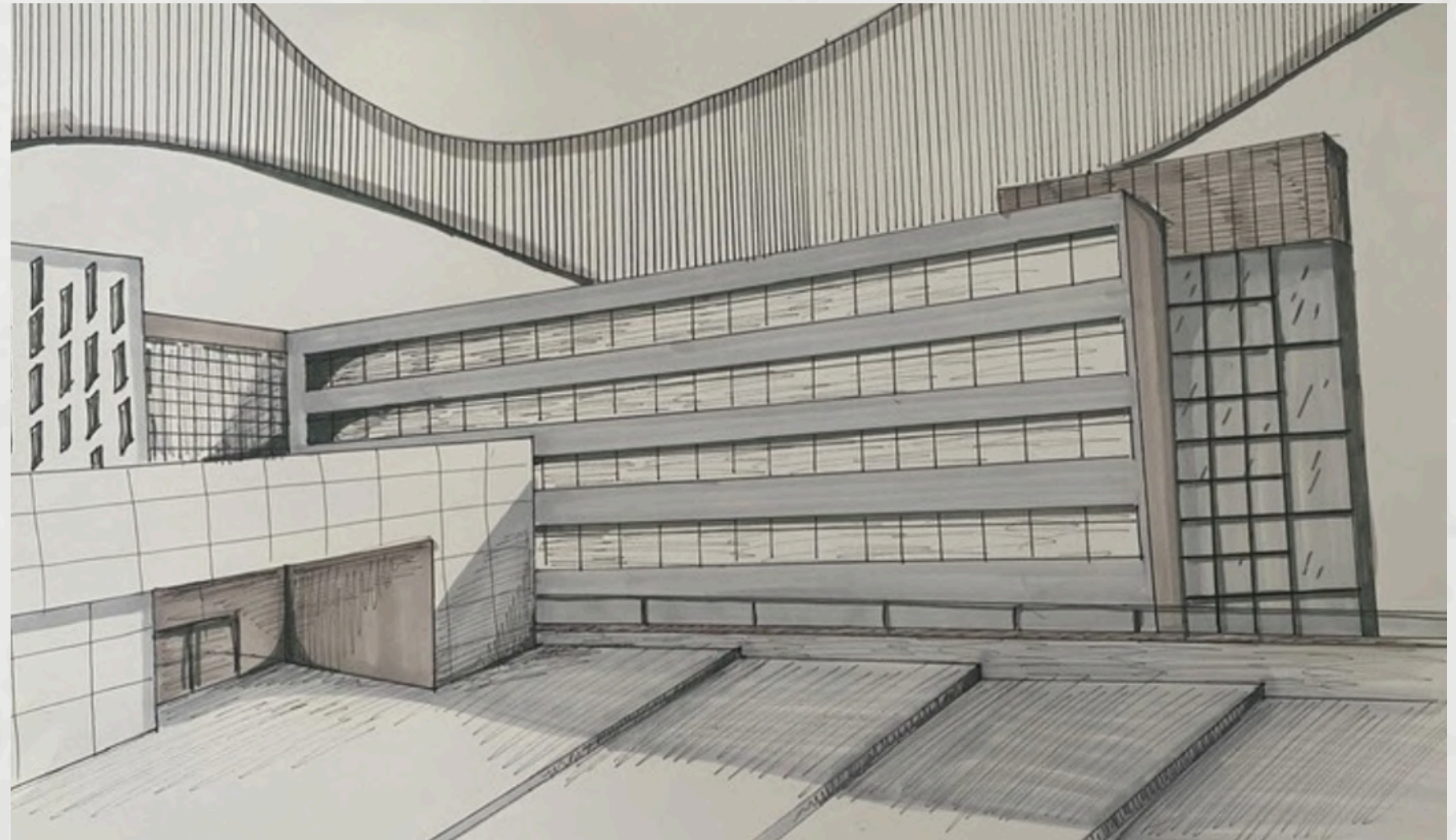
Kozarmisleny Civic
Center Project
28.



14

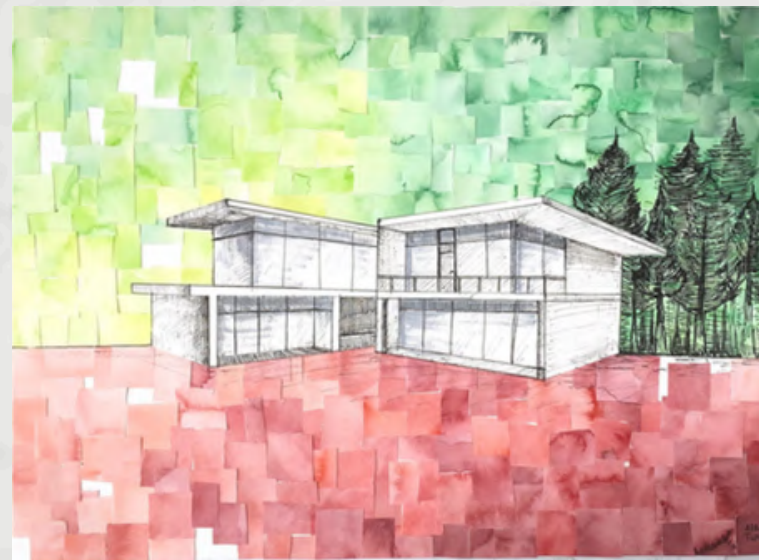
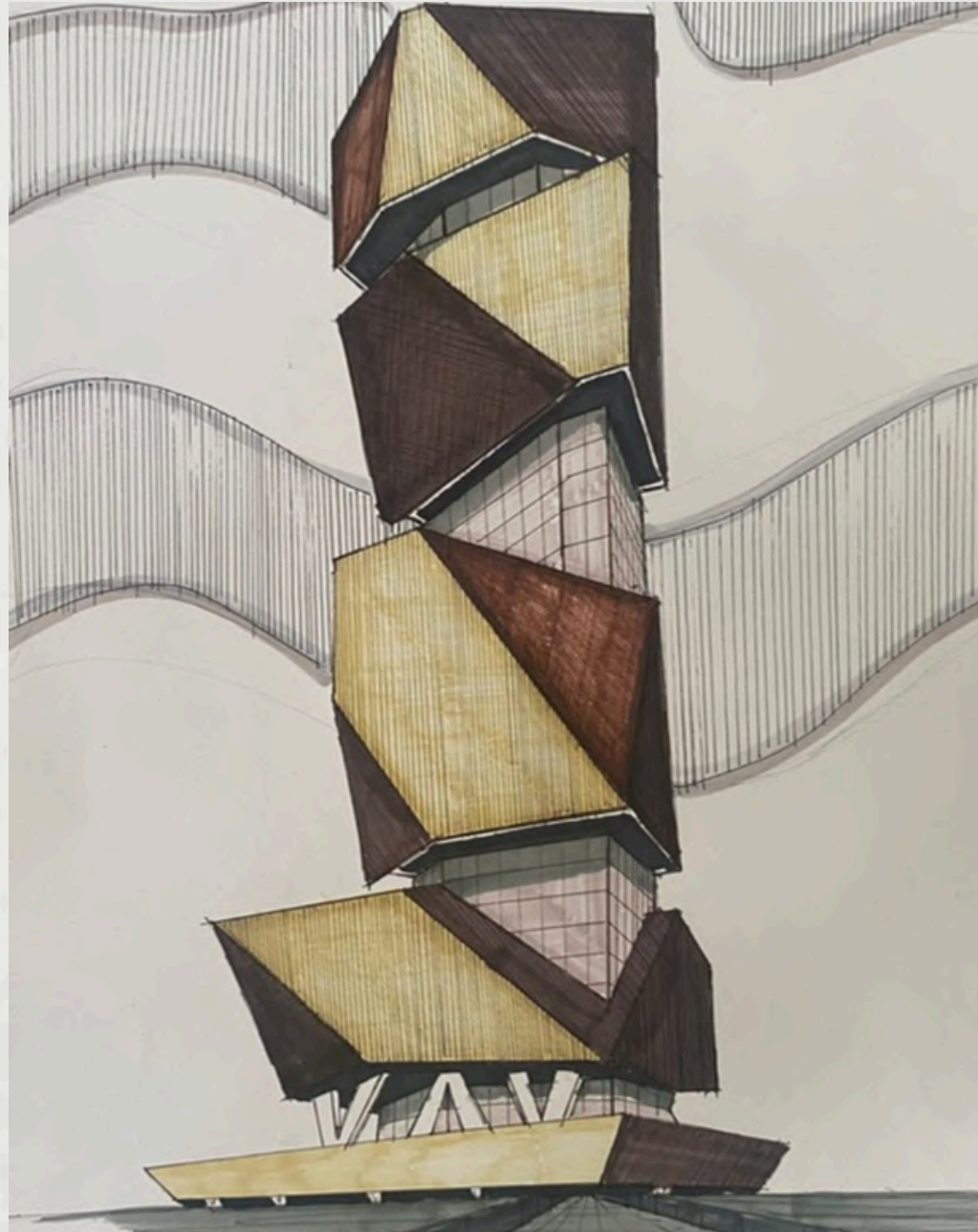
Sincap Köy Şile -
Villa Complex
33.

01 /HAND DRAWINGS



These drawings illustrate the dialogue between precise architectural lines and expressive color studies. The large perspective sketch investigates scale, structural rhythm, and depth, while the watercolor works explore how light, shadow, and landscape interact with the building form to create a distinct atmosphere. The water colour drawings helped study to understand drawing with a reference.

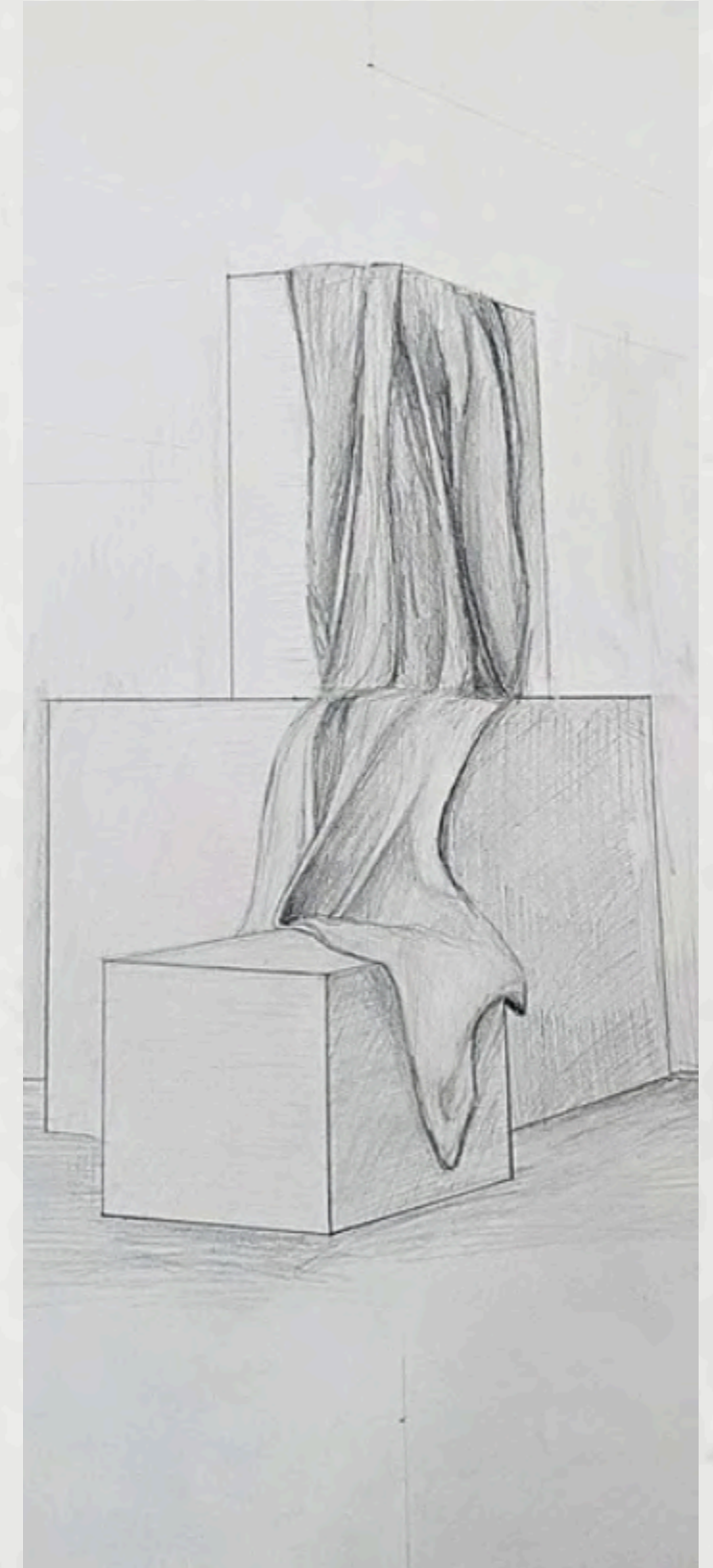
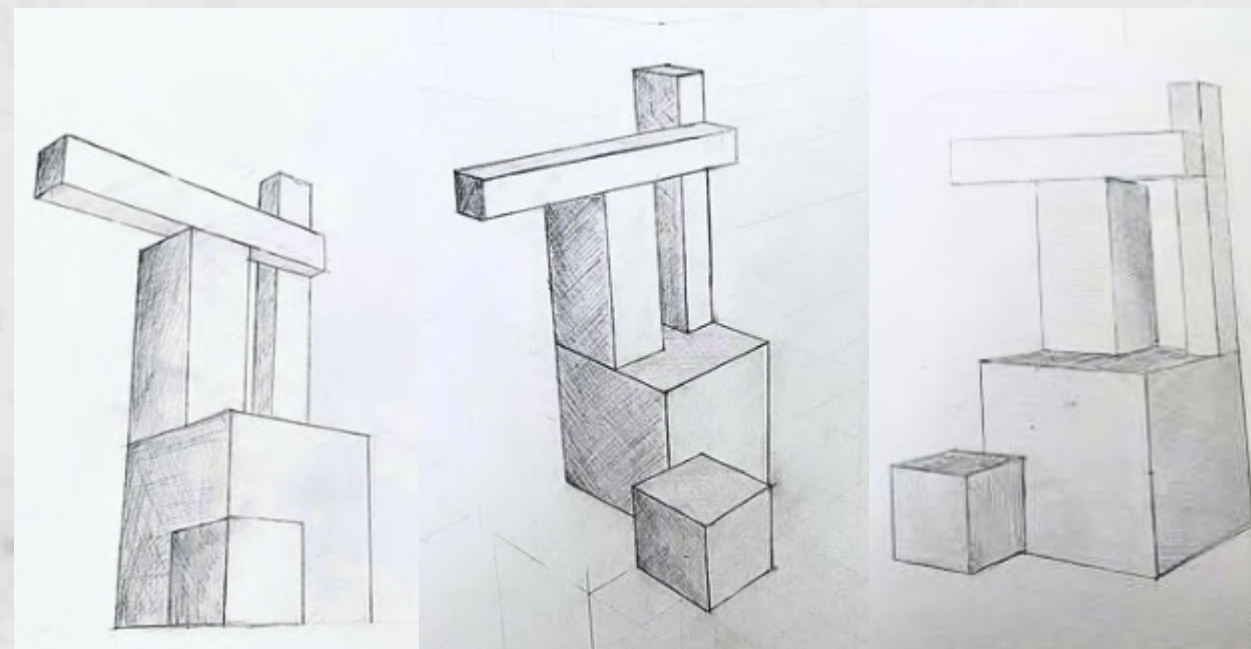
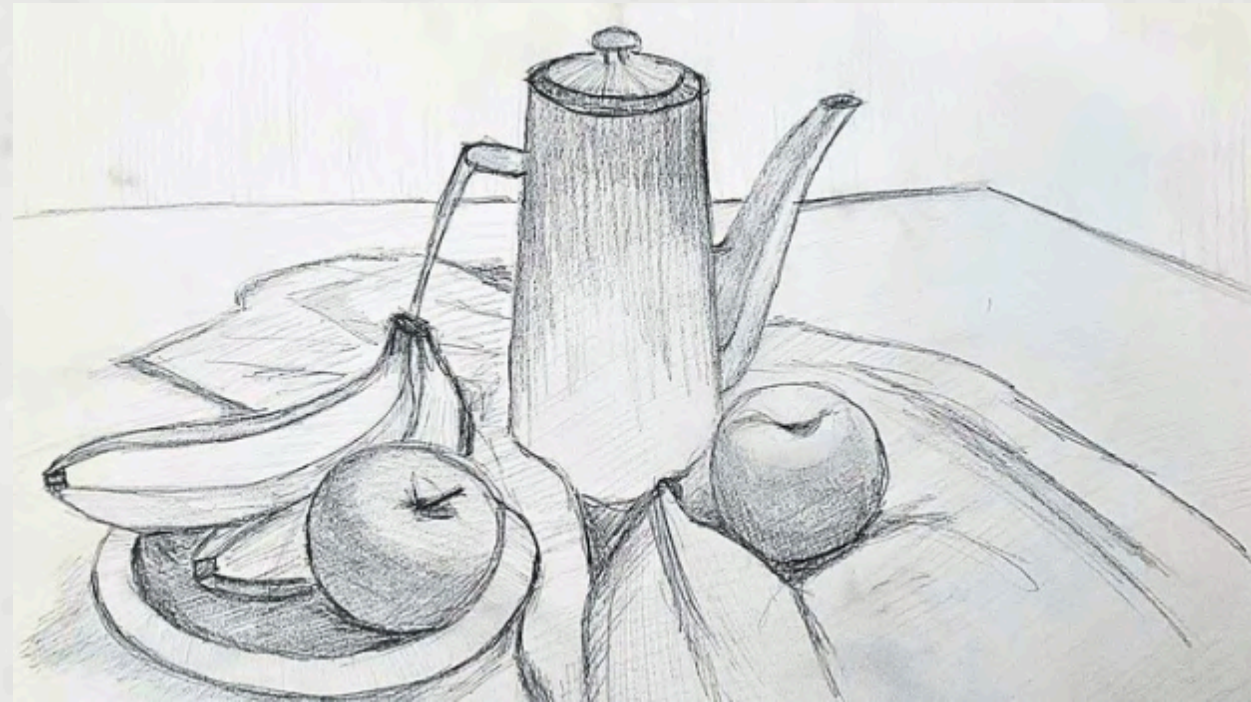
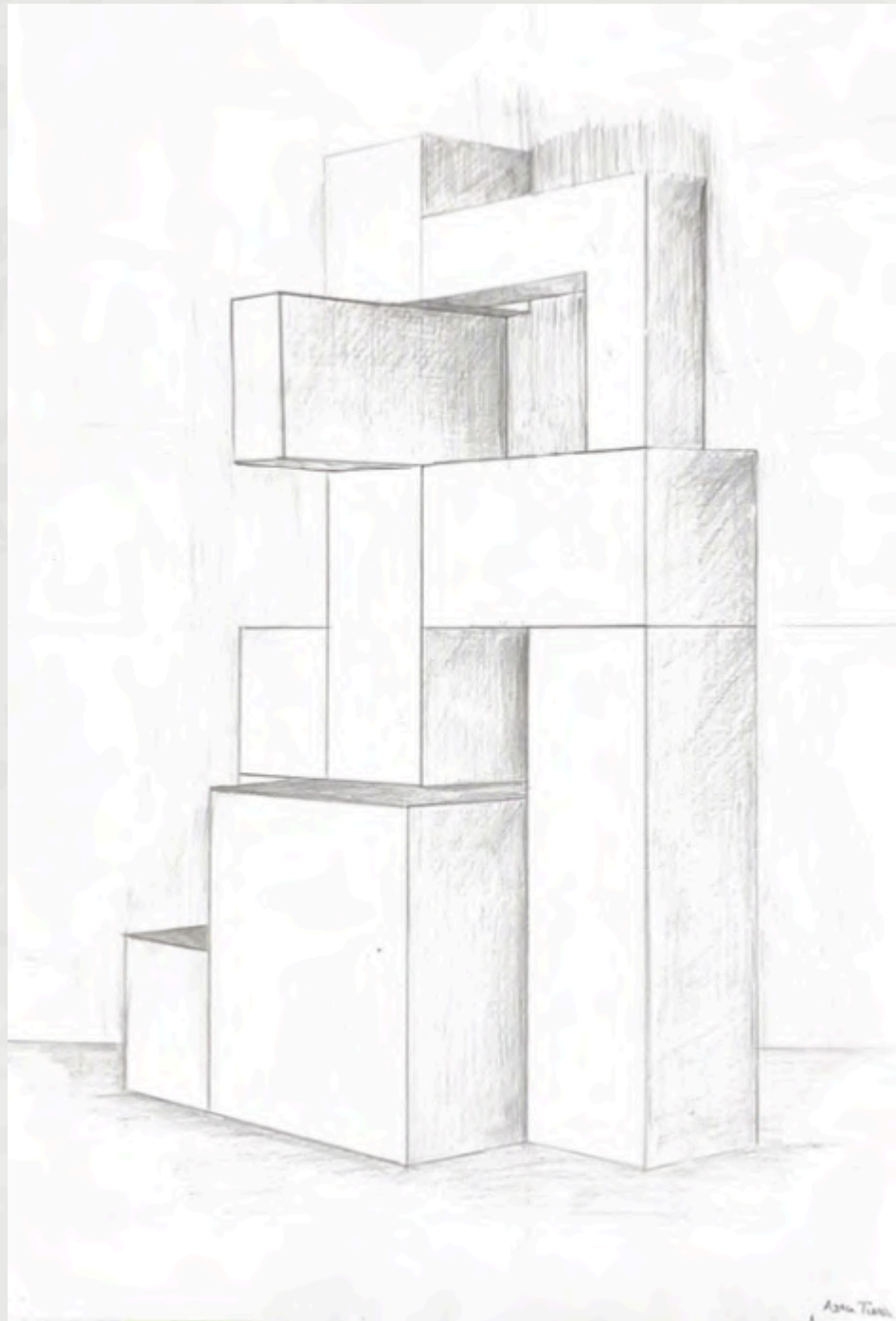


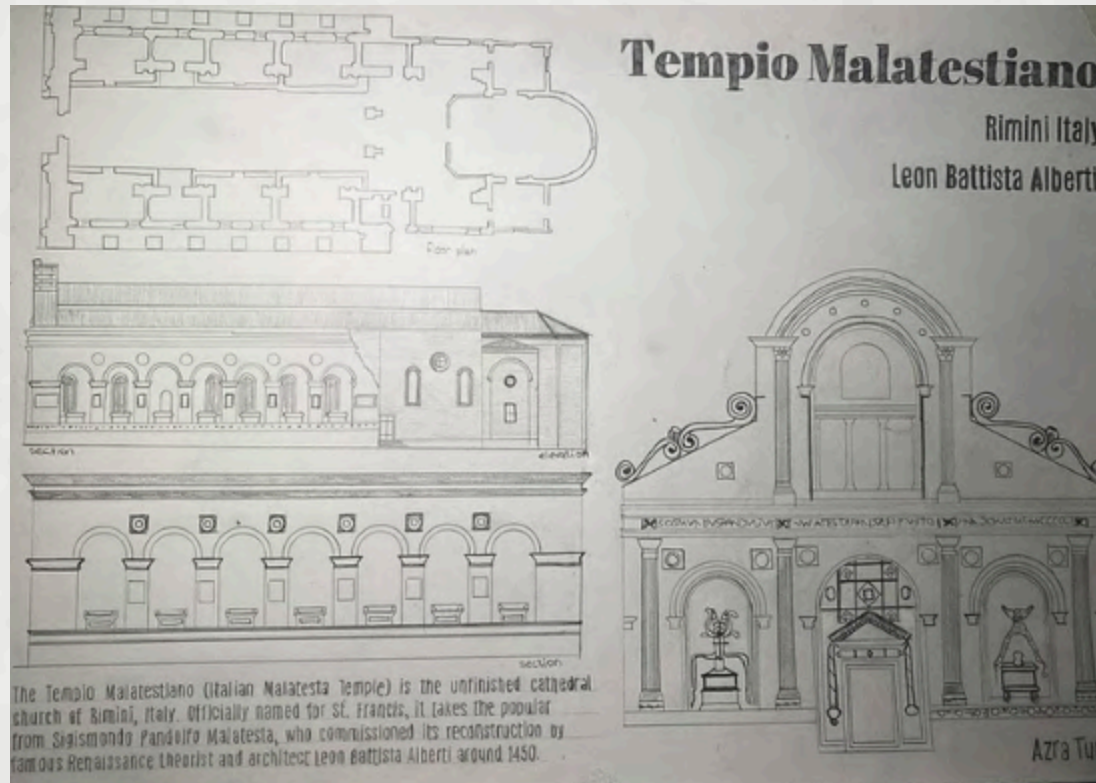


These hand drawings explore form, proportion, and perspective. Created during my architectural drawing classes over five semesters, they reflect how I developed my technique and confidence in visual expression. Working on different colouring and drawing helped me to easily adapt new techniques. Mainly water colour and markers were used for majority of projects

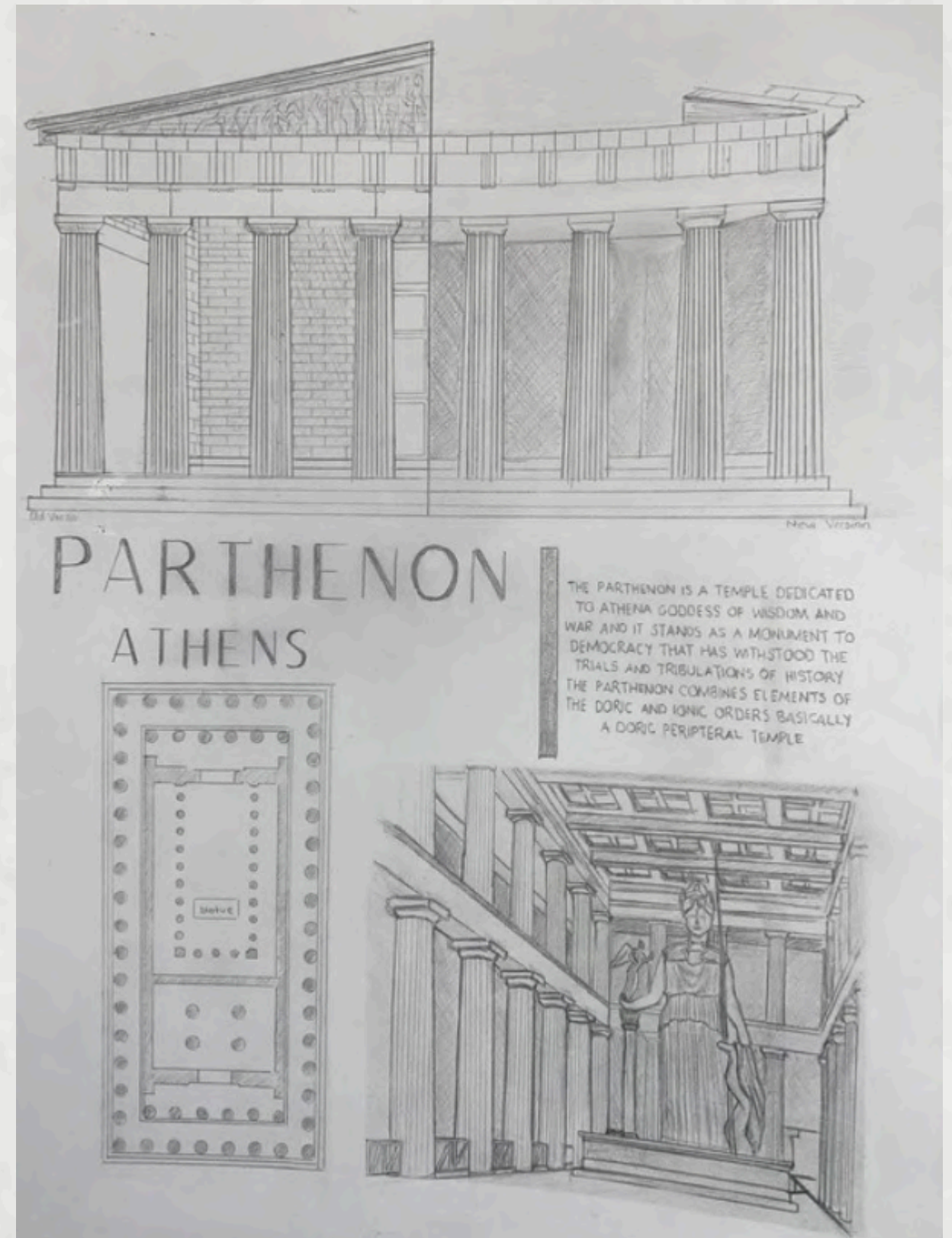
01 / HAND DRAWINGS

These drawings capture the steps I took to understand forms and shadows, a skill that has been vital in improving my ability to visualize and design objects in three dimensions. As I practiced, I became more better at translating what I observed into accurate representations, which directly enhanced my creative process and gave me a greater appreciation for the complexity of realistic drawing.



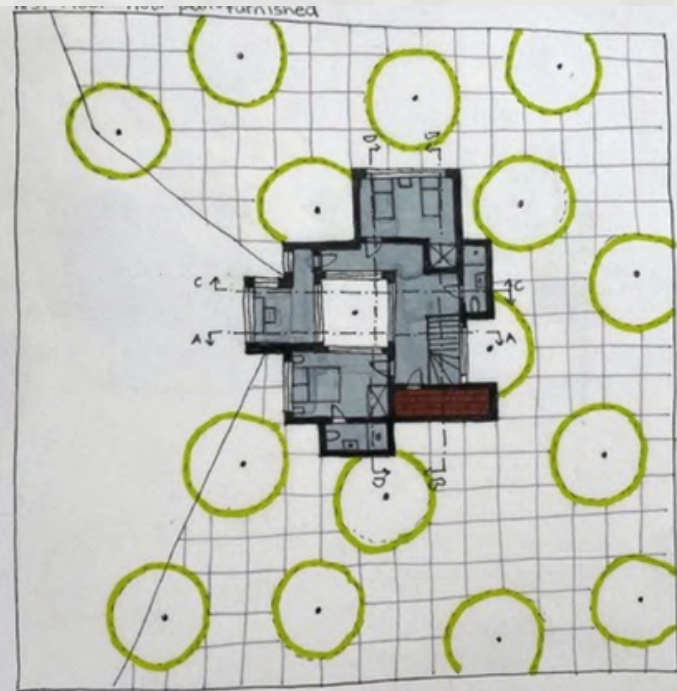


In these hand drawings, the primary goal was to closely study and understand historical buildings, then visually communicate their architectural features by creating detailed posters. Each drawing includes a facade and an accurate floor plan, both drawn by hand to capture the unique proportions, ornamentation, and spatial qualities of the structures. The accompanying texts on the posters highlight significant architectural elements and contextual information about each building. These drawings were produced over three different semesters for the same course, History of Architecture, allowing me to develop my observational skills, improve my technical drawing abilities, and gain a deeper appreciation for historic architectural styles.

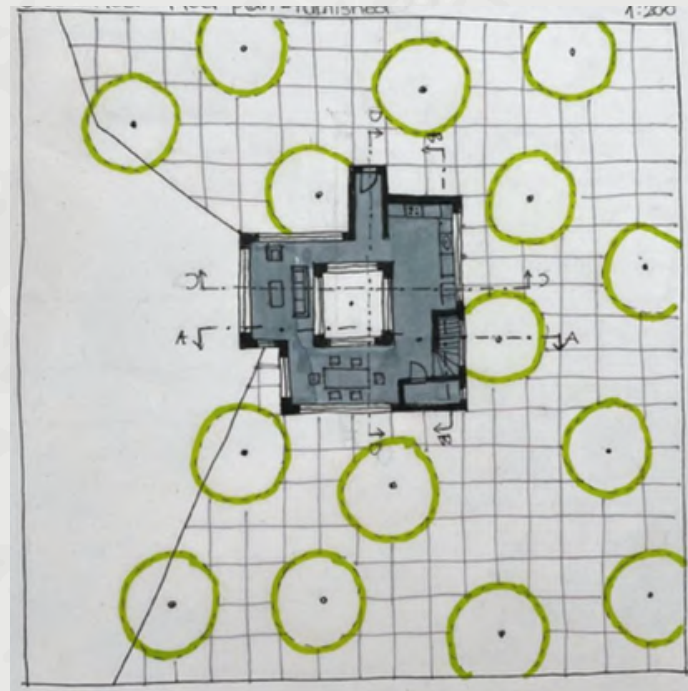


02 / LAKE HOUSE PROJECT

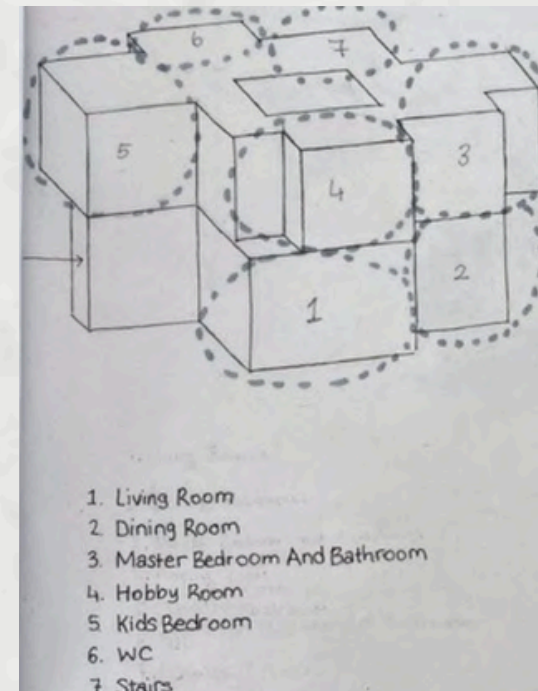
The vision for the Lake House is centered on creating a harmonious retreat within the forest canopy. The concept uses a modular approach of stacked and layered forms, designed to minimize impact on the site while maximizing visual connections to the water. The offset cubes create dynamic living spaces with private terraces, framing specific forest and lake views. The internal void acts as a central light well, filtering sunlight throughout the interior and creating a calm, meditative core that reflects the tranquility of the natural surroundings. This composition allows for private spaces above with open, communal areas below, all tightly integrated with the natural landscape.



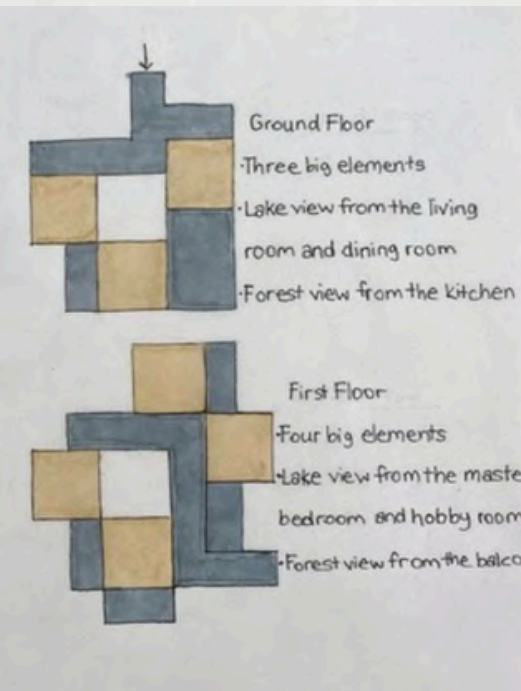
Ground Floor Plan



First Floor Plan

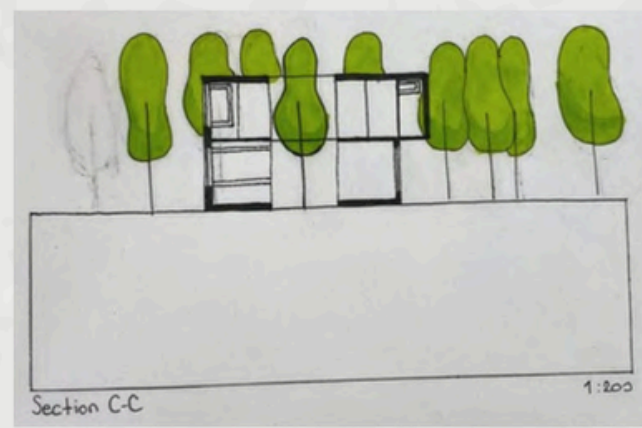


1. Living Room
2. Dining Room
3. Master Bedroom And Bathroom
4. Hobby Room
5. Kids Bedroom
6. WC
7. Stairs



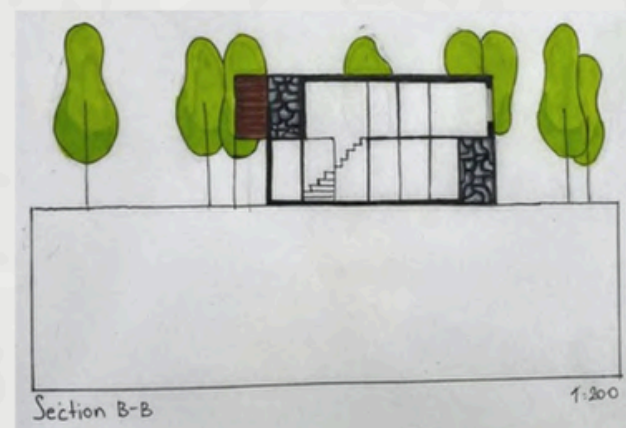
Section D-D

1:200



Section C-C

1:200



Section B-B

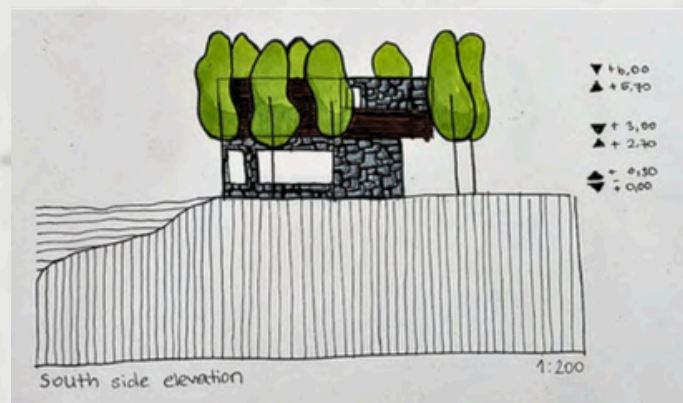
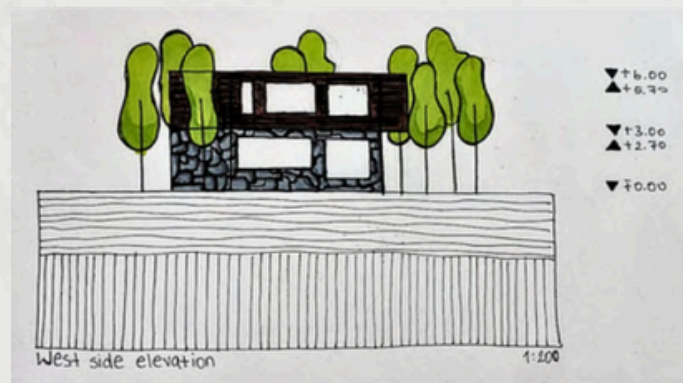
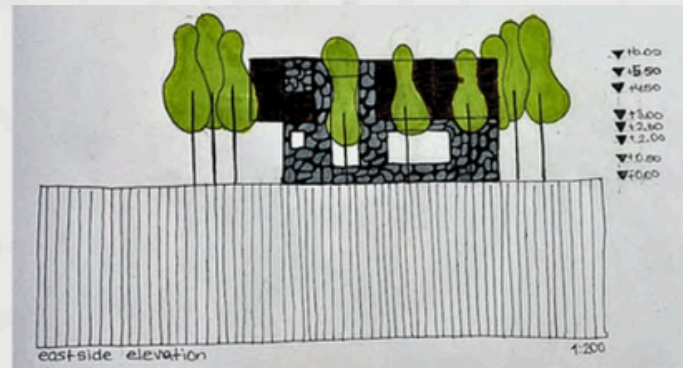
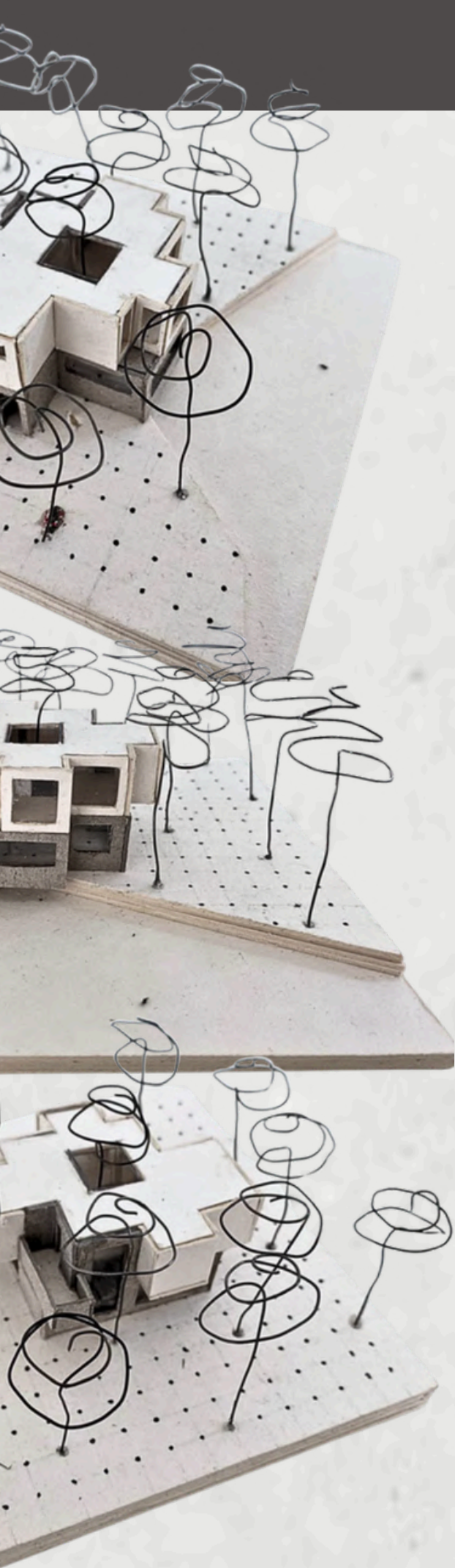
1:200



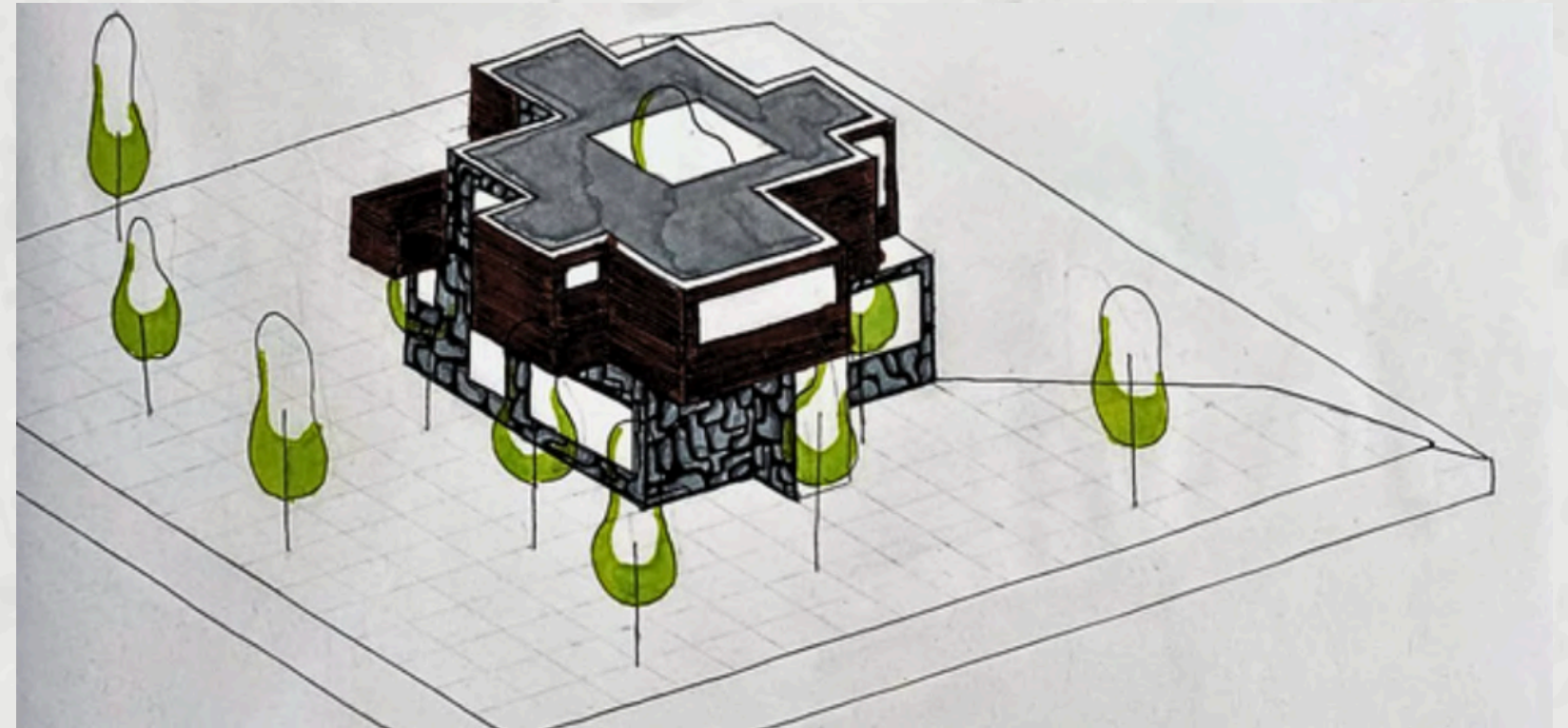
Section A-A

1:200

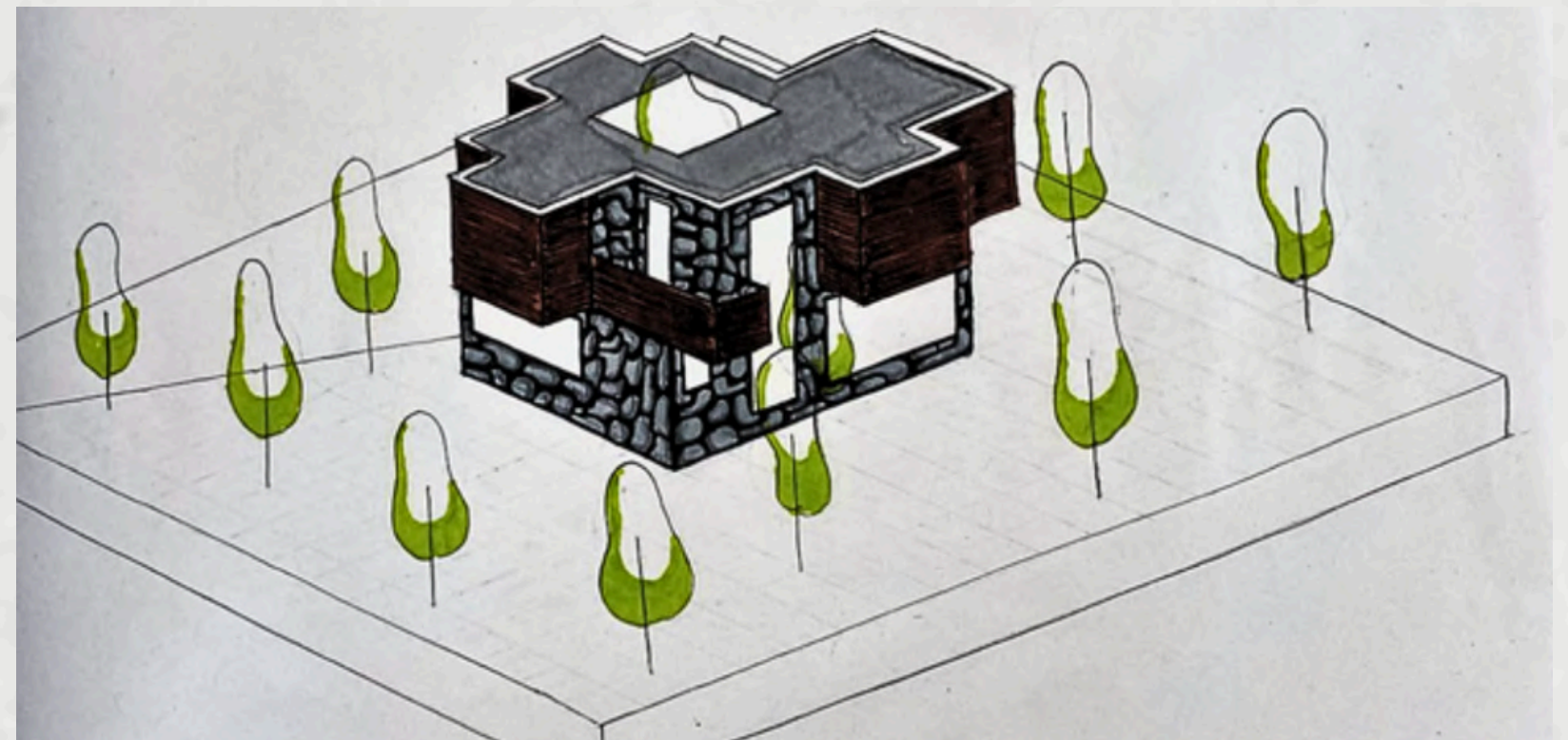




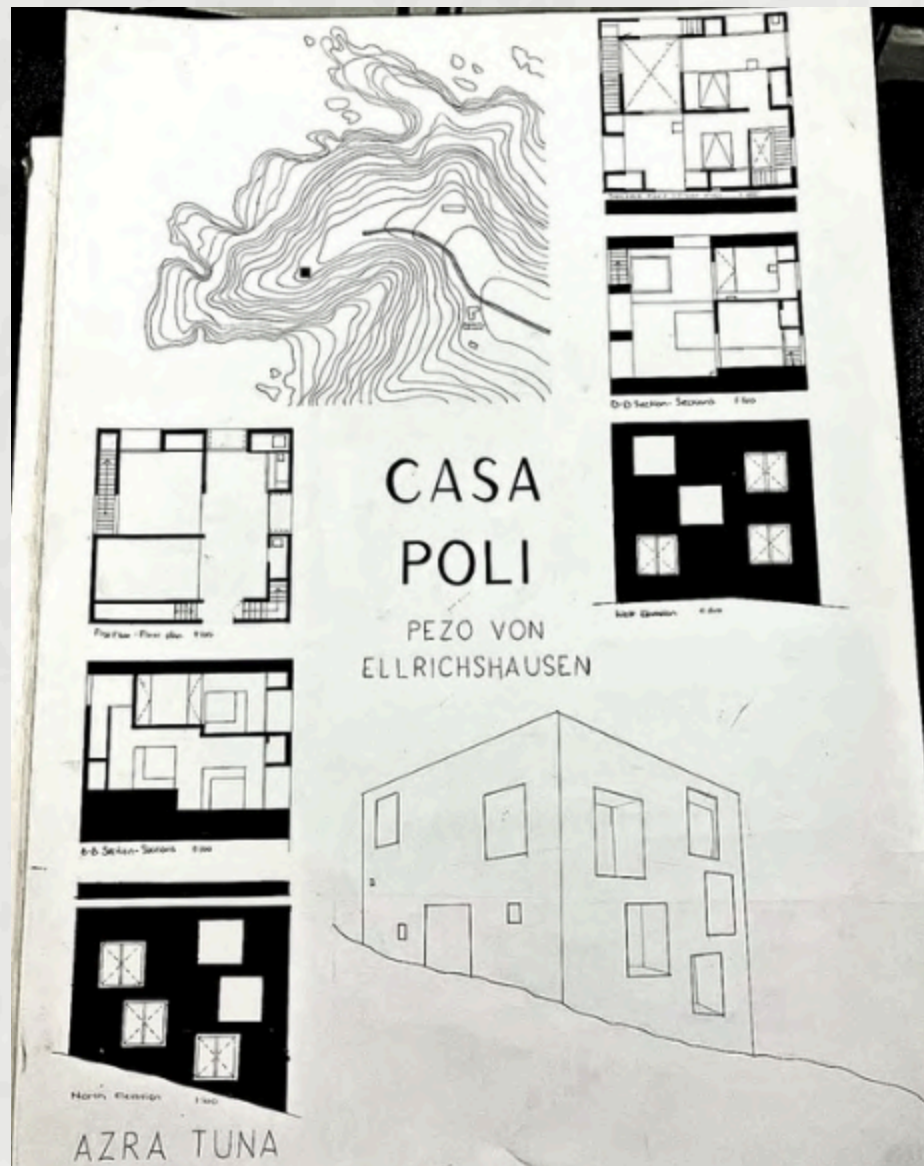
Axonometric View



Axonometric View



03 / PHYSICAL MODEL TASK

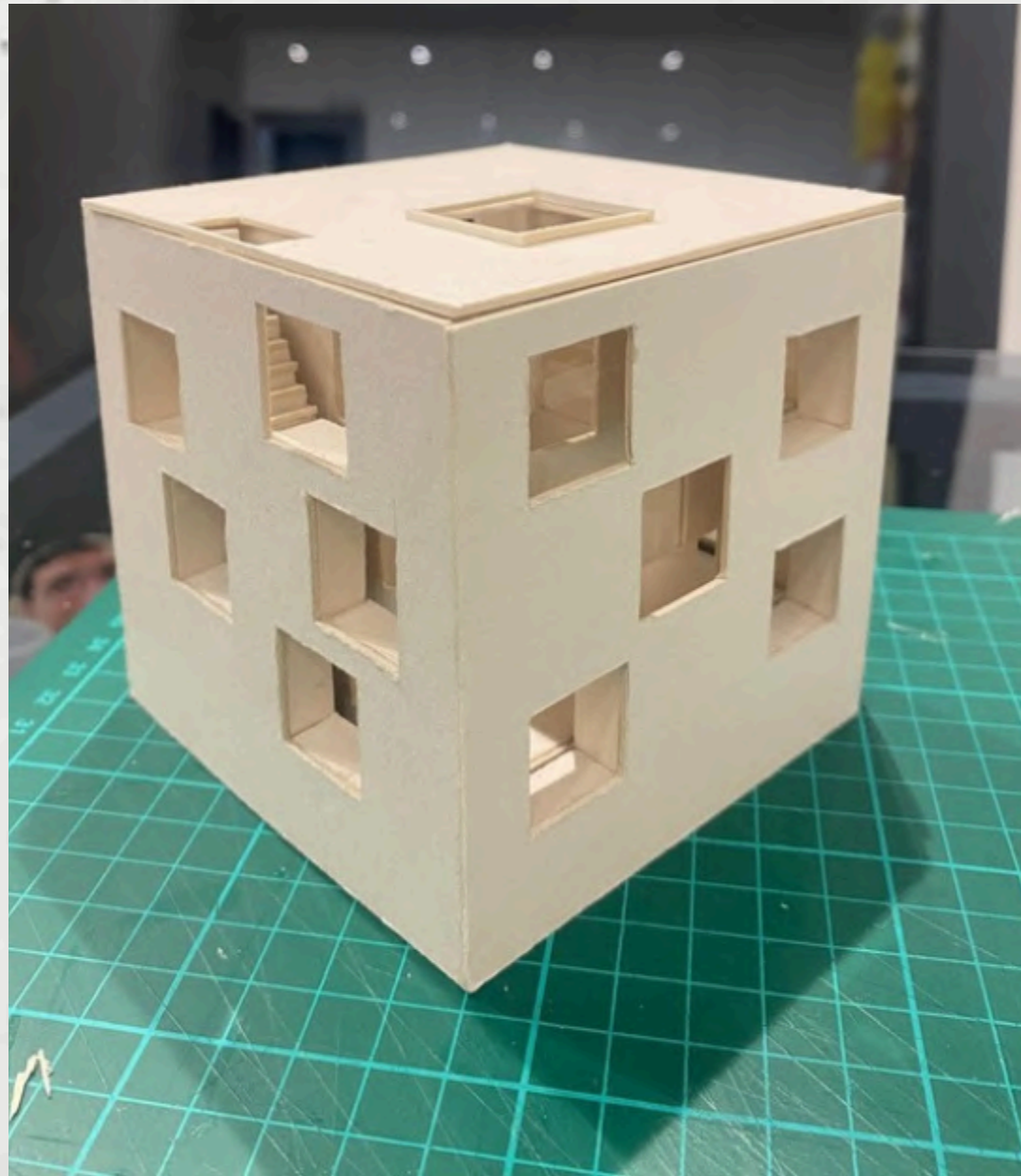


The physical model is to understand Casa Poli's singular design. It prioritizes the monolithic form, using specific aperture voids to hint at the rich, continuous internal circulation.

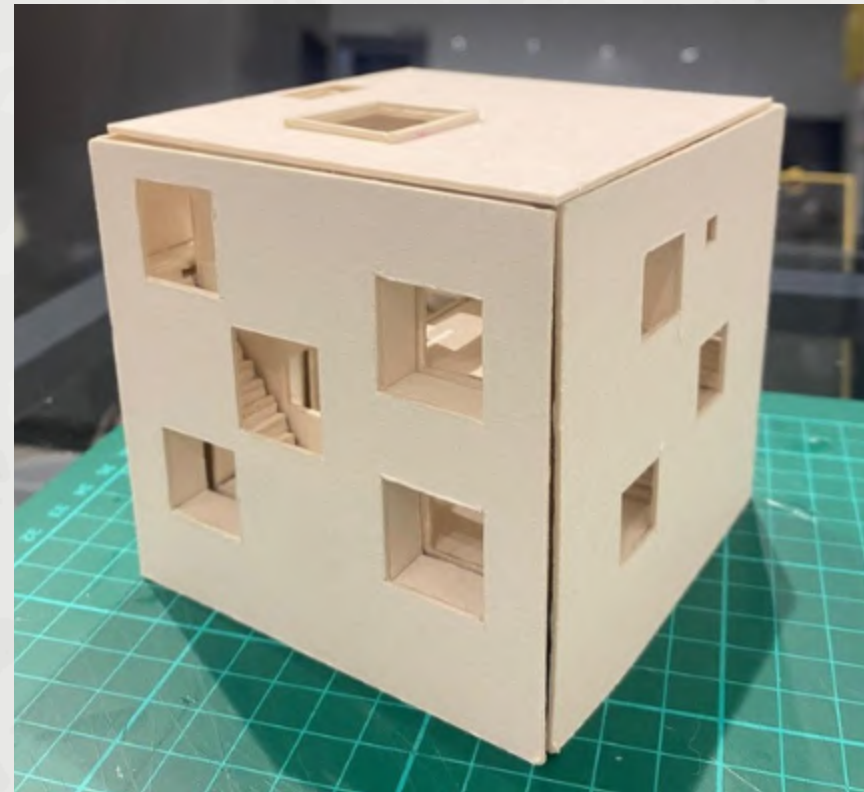


I began by diving into the Casa Poli posters, tearing down the plans, sections, and even the landscape itself. My goal was to see past the simple cube and uncover the hidden system of carved voids that defines its true design logic. By deconstructing these elements, I aimed to understand how the internal geometry manipulates natural light and dictates the flow of the interior. This analytical process ultimately revealed the brilliant contrast between the building's monolithic exterior and the intricate, layered spaces hidden inside.

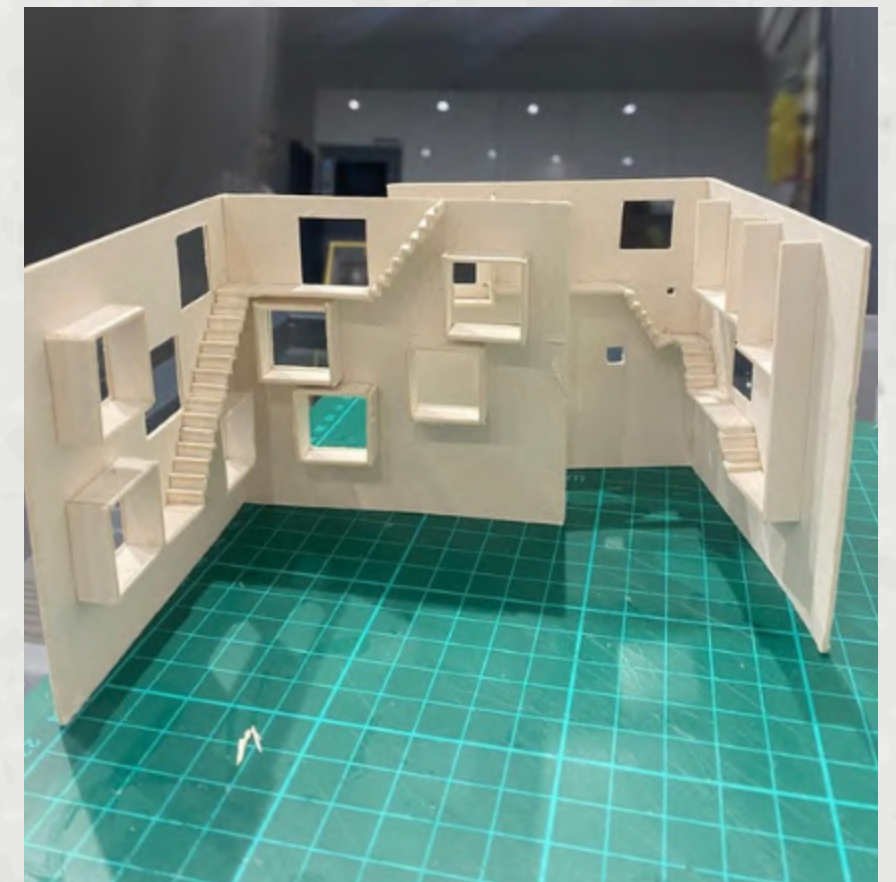
PHYSICAL MODEL TASK/ 03



To clearly show how it all works, I built the model so it could be pulled apart. Opening it up reveals the entire winding stair system and the layered, almost sculptural way the spaces connect across different levels, making the building's brilliant internal experience visible at a glance.



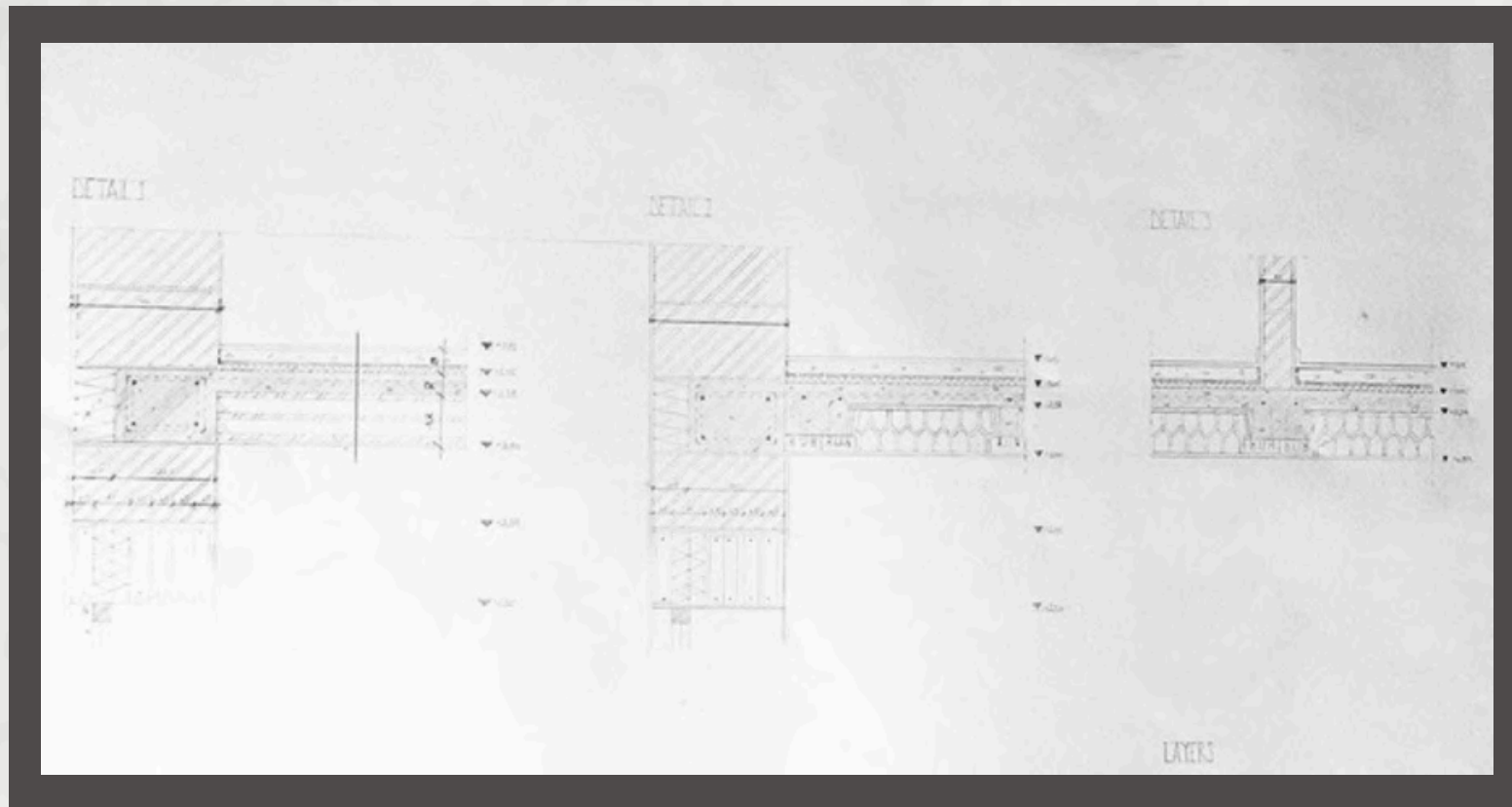
The task focus on cracking Casa Poli's unique internal circulation. I built the model to show that it's not just a stack of regular floors, but a continuous, surprising journey through carved-out volumes and interconnected voids, all hidden inside that seemingly simple shape.



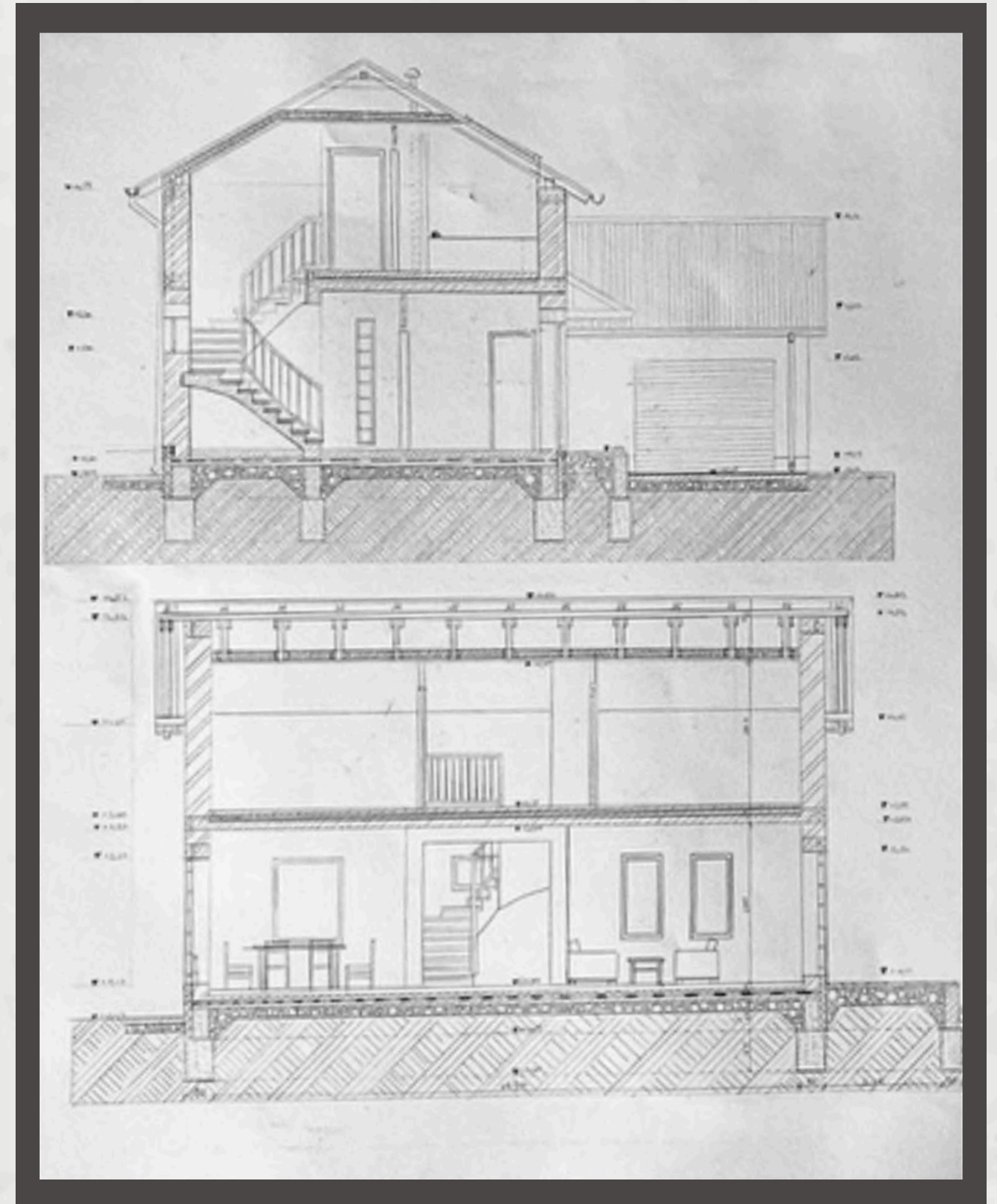
The task focus on cracking Casa Poli's unique internal circulation. I built the model to show that it's not just a stack of regular floors, but a continuous, surprising journey through carved-out volumes and interconnected voids, all hidden inside that seemingly simple shape.

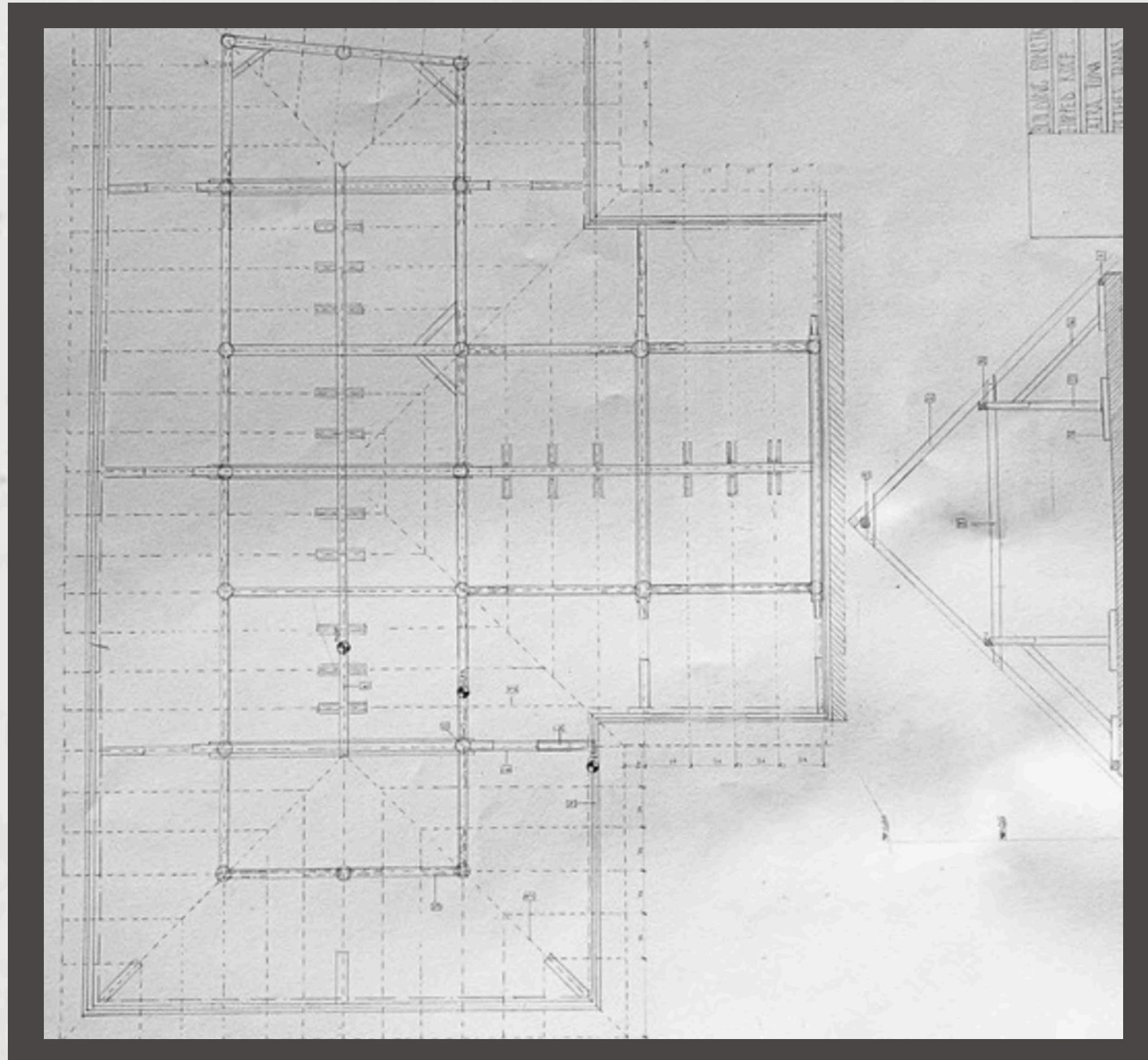
04/TECHNICAL DRAWINGS

These technical drawings explore the structural and spatial qualities of a pitched-roof detached house. The main section drawing reveals the internal volume of the home, while the accompanying detail drawings break down the critical construction nodes. This careful detailing highlights the specific transitions between the roof structure, the exterior walls, and the foundation, showcasing a practical approach to residential construction.

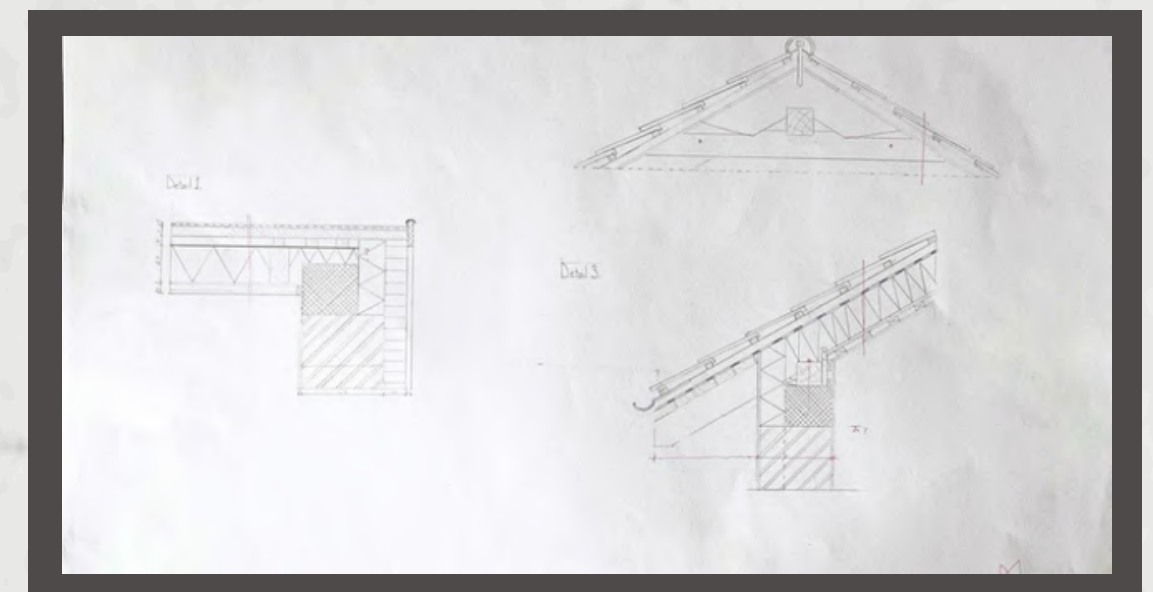
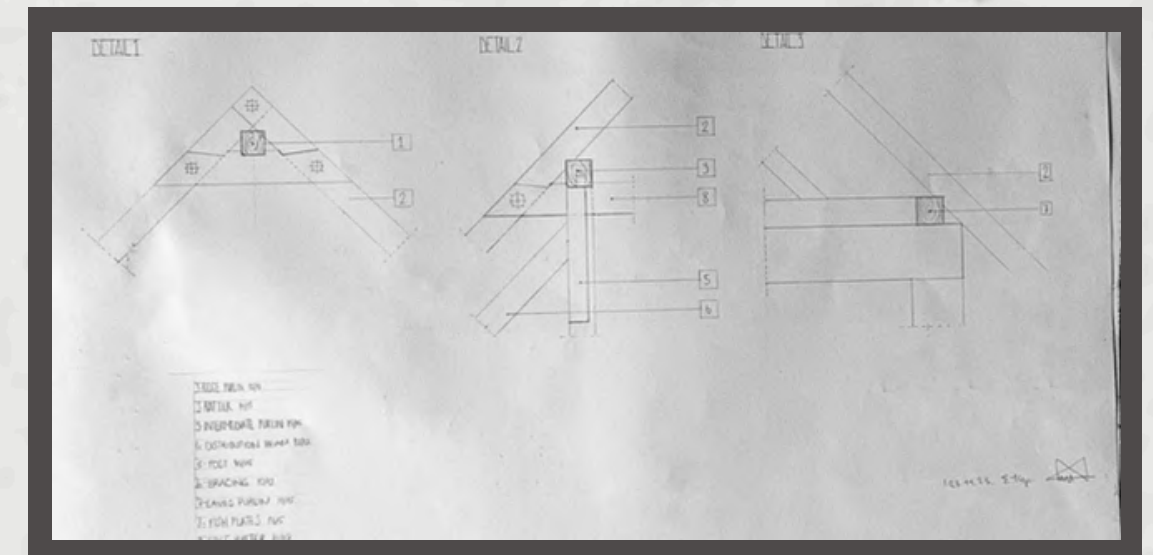


Building upon the main section, the detailed call-outs dissect the most critical junctions of the build. Specifically, they demonstrate the precise connection points between the timber roof framing and the primary load-bearing walls. These detailed explorations are essential for showing how the structural loads are transferred, ultimately translating the conceptual design into a buildable, structurally sound reality.



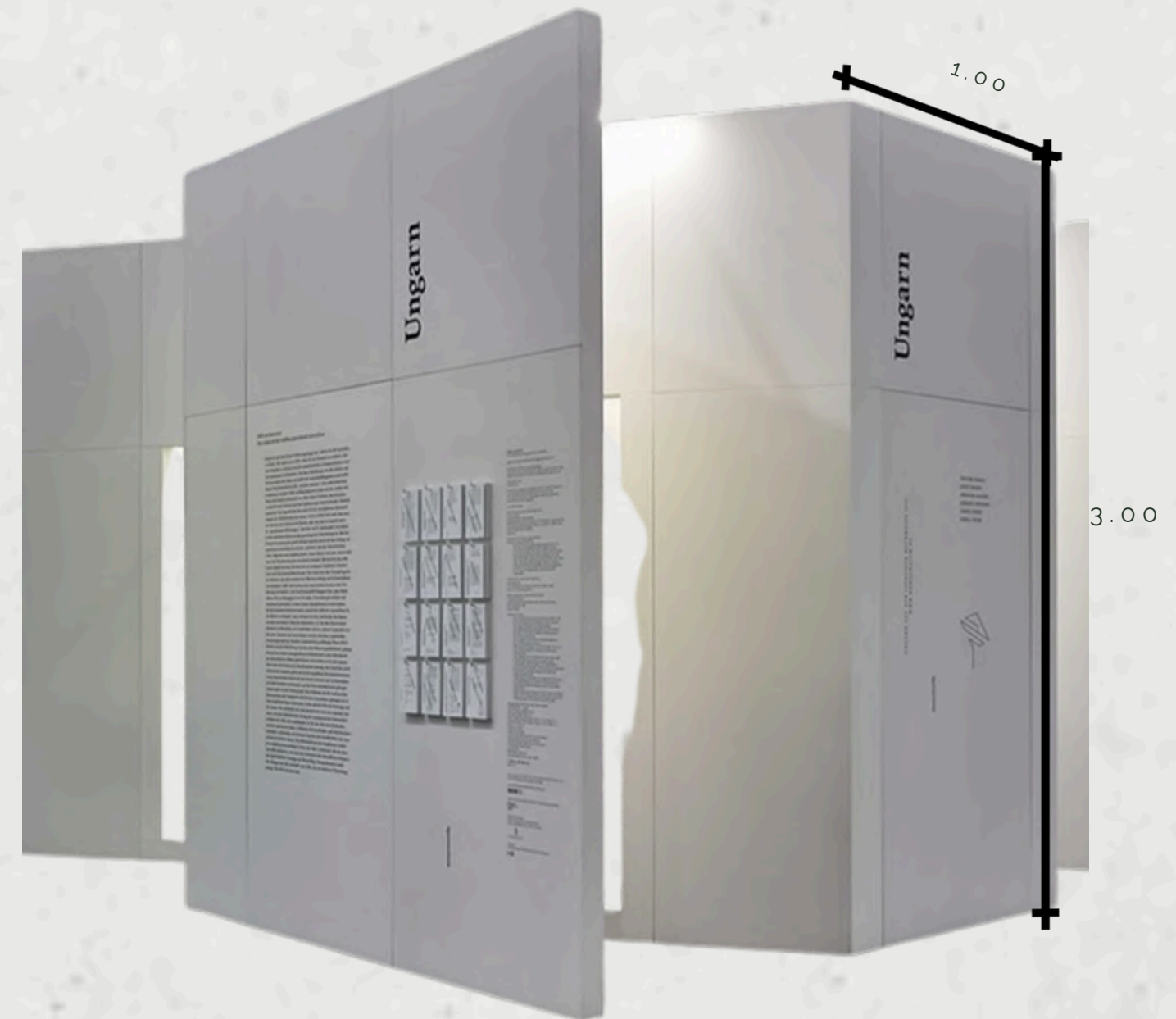


This project focuses exclusively on the structural anatomy of a complex roof system. The detailed framing plan maps out the complete timber skeleton, illustrating the precise arrangement, sizing, and spacing of the rafters and supporting beams. Accompanied by specific construction details of key nodes, these drawings demonstrate a rigorous understanding of load distribution and structural joinery.



05 / PAVILION FOR TRANSITIONAL HOUSE

In this task the aim is to design a new pavilion for a temporary housing. This space will serve as community hub where residents can play games, socialize and participate in activities. Offering a welcoming atmosphere. The pavilion will help strengthen community and improve the quality of life for all residents.



The main material used for the pavilion comprises used panels to recycle from the Leipzig book fair that are stored at the university. These panels are 1 meter wide, 3 meters high, and 10 centimeters thick. Other than the panels to make the building more cost efficient used bricks were used for flooring

Concept and Materials



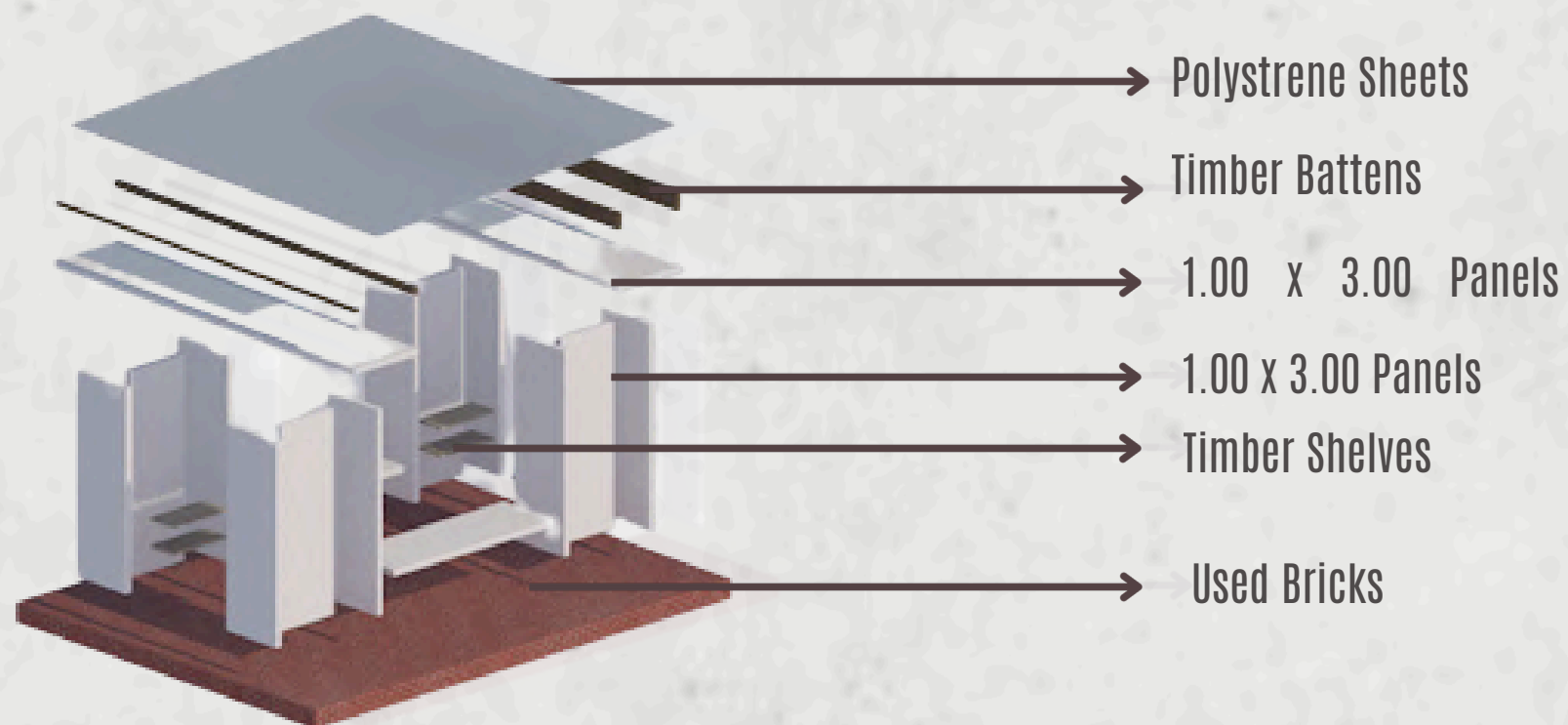
The concept is based on a stable structure created by panels that function as columns.

Initially combining two panels to create a 'T' shaped unit.

For added stability an 'I' shape was formed using three panels.

For the tables a single panel was used in between two 'I' shaped units.

To fix panels to each other 'L' shaped fixing brackets were used

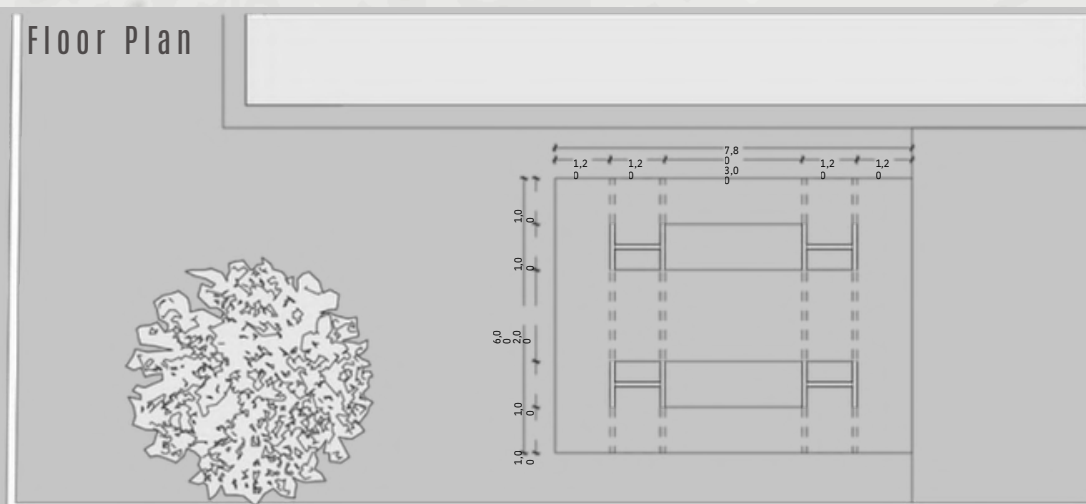


05 / PAVILION FOR TRANSITIONAL HOUSE

A comprehensive visual study of the modular pavilion. This presentation board curates a collection of experiential renders that explore the structure's adaptability and human scale. The main central images showcase a communal lounge, highlighting how integrated seating and open facades foster connection.



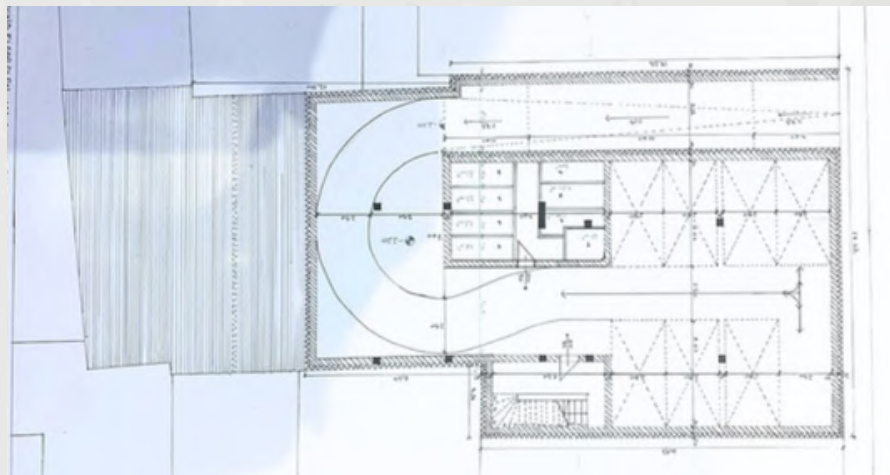
The technical drawings—a floor plan and a section—ground the experiential visuals in precise architectural logic. They reveal the structural framework and the seamless transition between indoor and outdoor areas, providing essential technical context.



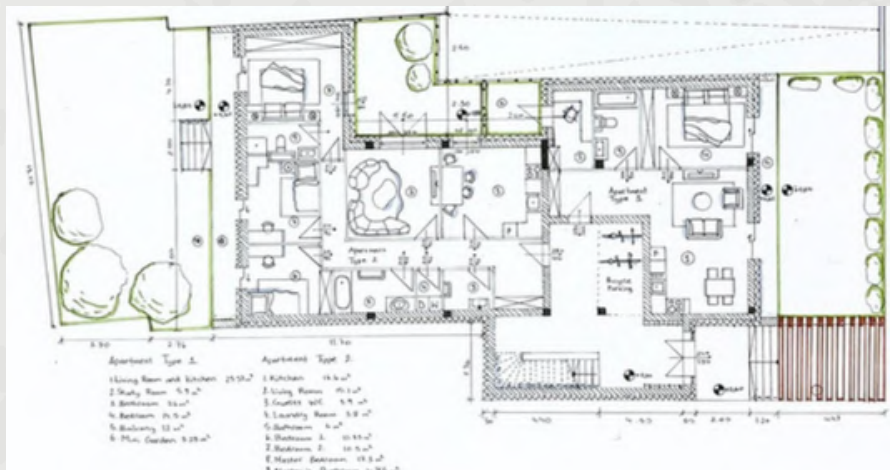
APARTMENT BUILDING PROJECT/ 06

Floor Plans

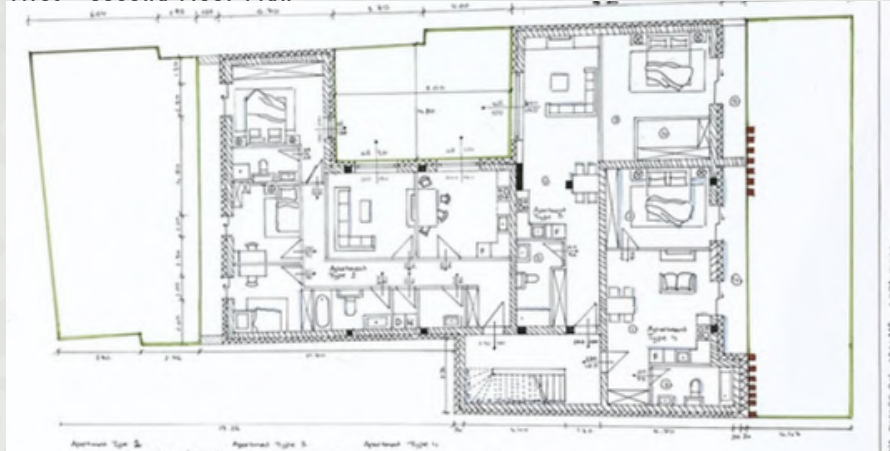
Underground Parking Floor Plan



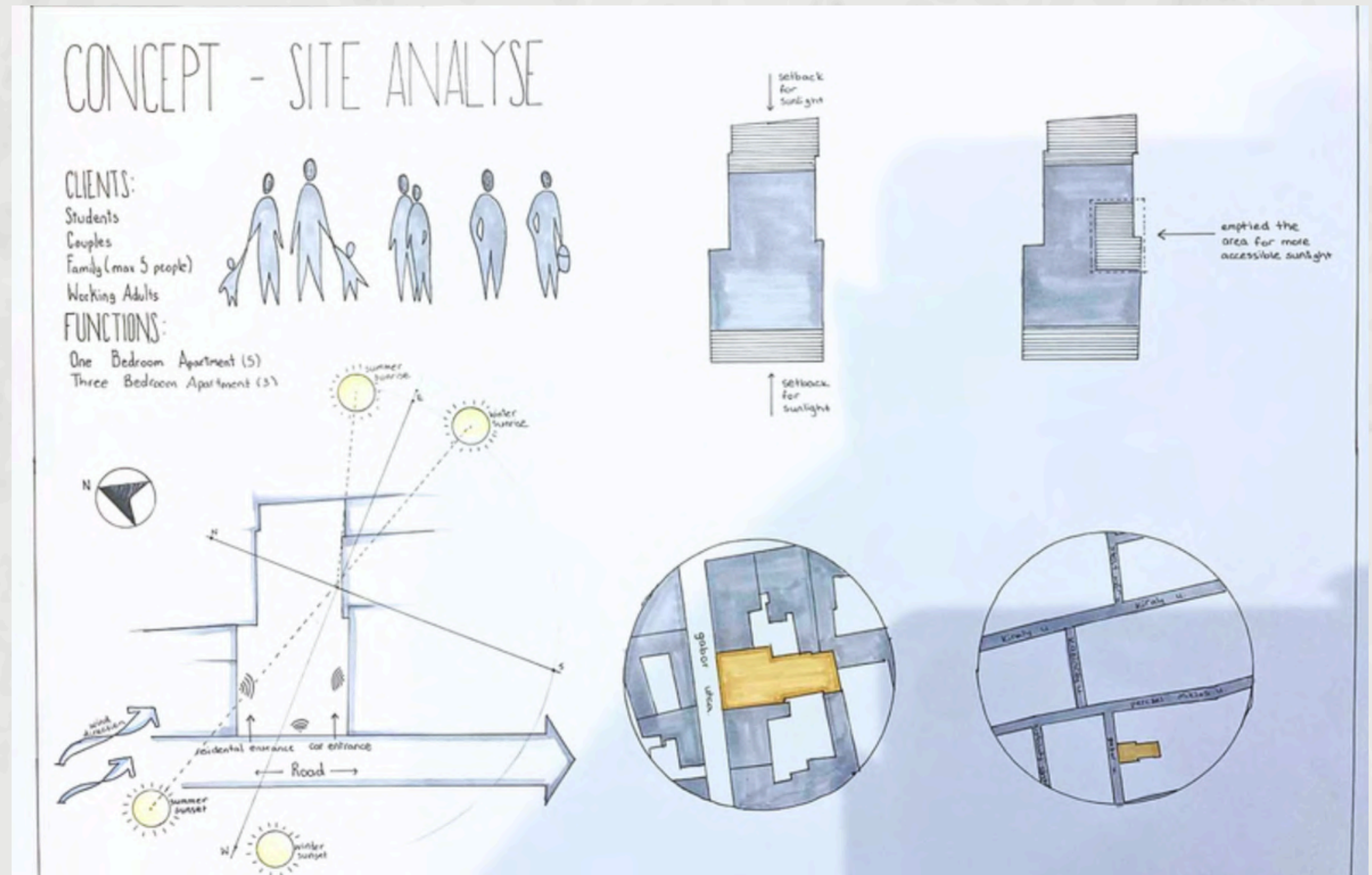
Ground Floor Plan



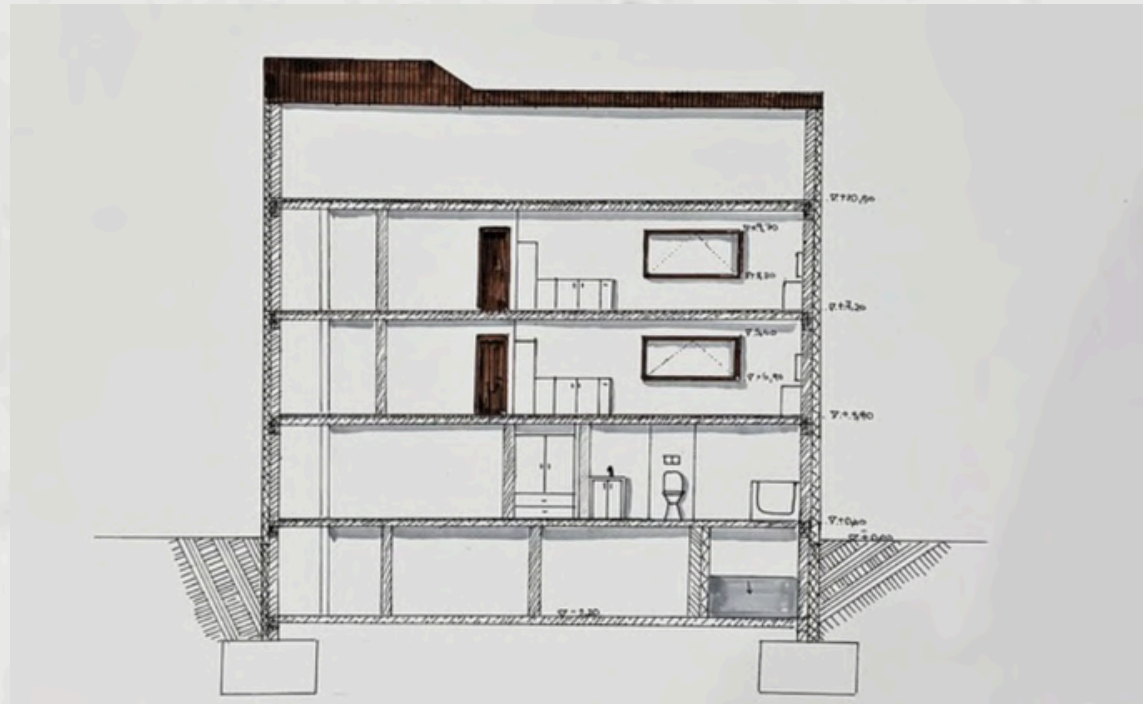
First - Second Floor Plan



This project marked our first opportunity to conduct in-person site analysis. Presented with four potential locations, I visited and evaluated each one. I ultimately selected this site because its irregular shape posed a unique design challenge compared to the others, making it the most compelling option.



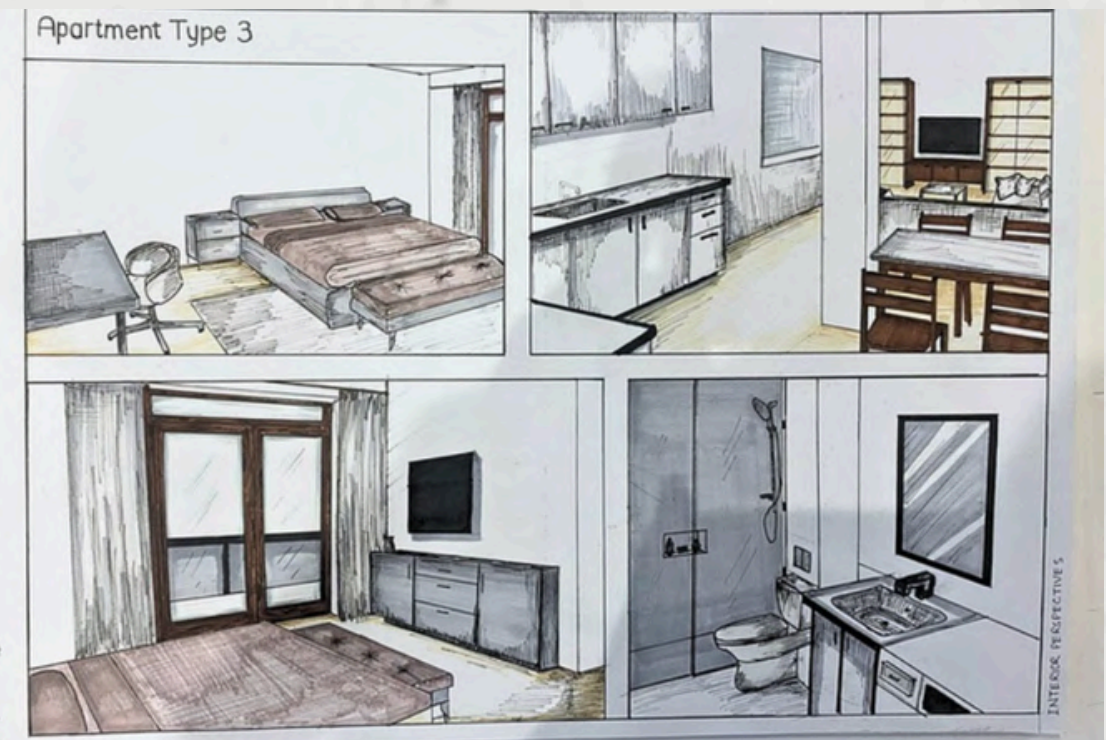
06 /APARTMENT BUILDING PROJECT



The circulation of the apartment is basic, starting with the underground parking and storage, going up on the ground floor, 2 apartments and an indoor bicycle parking. For the two upper floors, the layout remains the same, with 3 apartments. There is also an attic for the maintenance of the apartment.



Below are the visual representations of the various apartment types. Because the project brief specifically required hand-drawn submissions rather than digital renderings, I focused heavily on creating highly detailed interior sketches to ensure the spatial layouts were communicated as clearly as possible. Although the minimum requirement was three interior visuals per apartment type, I developed four for each to provide a more comprehensive overview.



SKETCHES/ 07

> Makao Workshop / Ateliers AUAV



> Skylights on the roof

> Maxell Kuse Era Aru Studio / Kualito

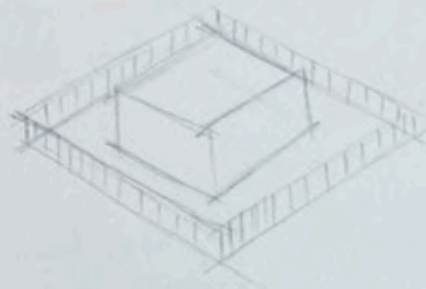


> Cantilever roof, good for terrace

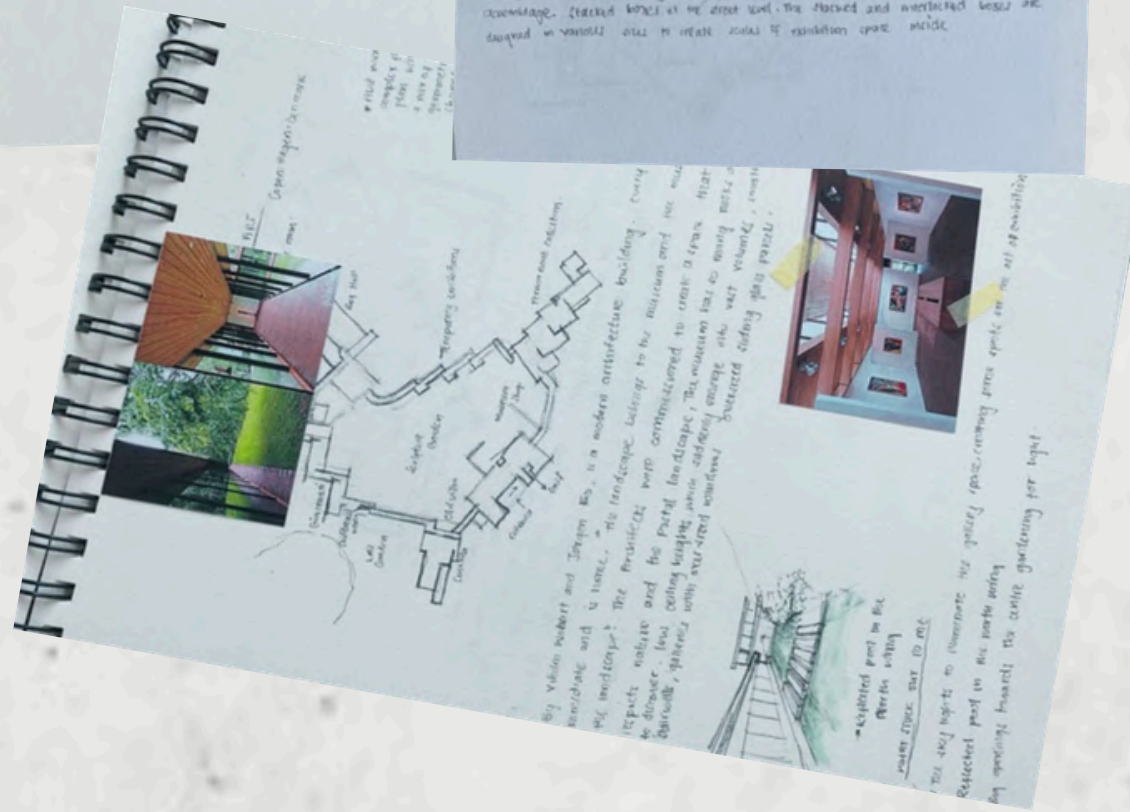


> Contrast with the surrounding buildings

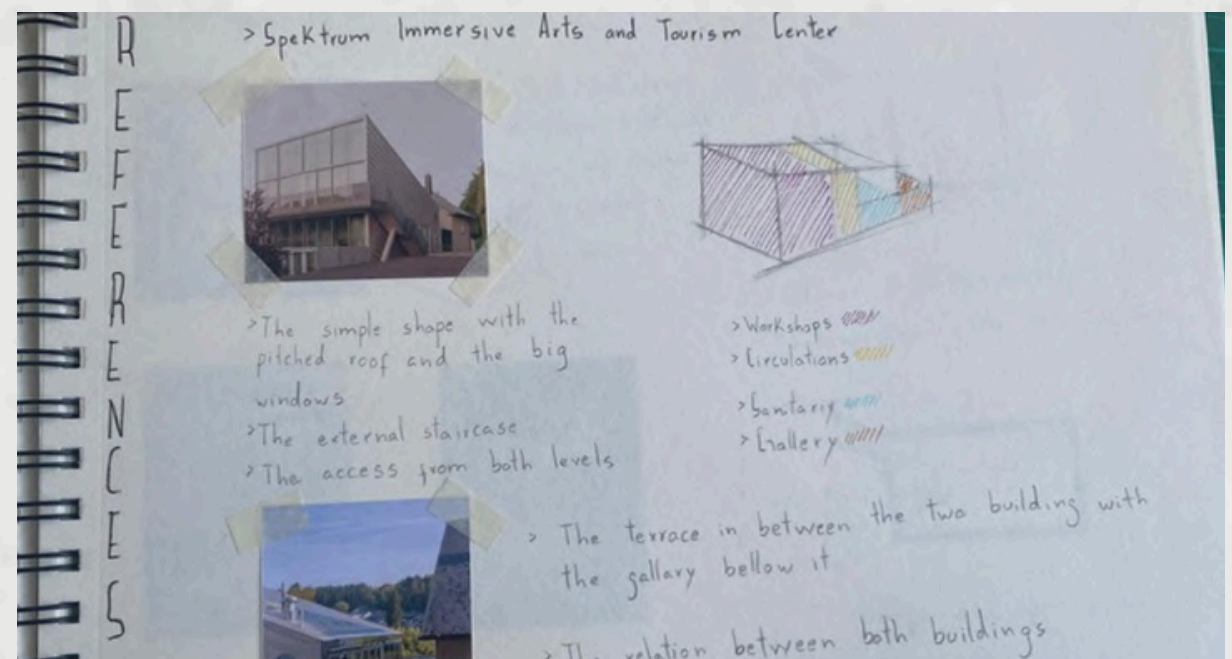
> Main focus of the street without looking overplaced



> Upper floor idea



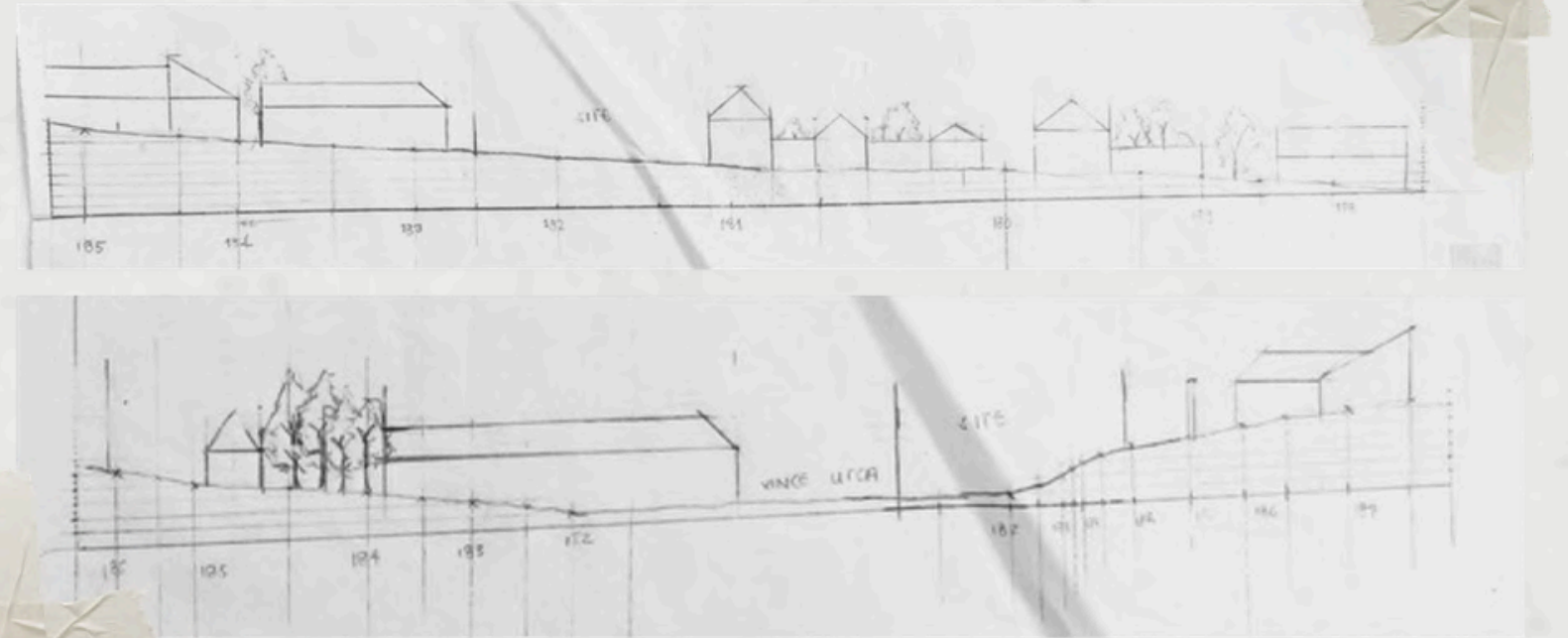
To establish a strong foundation before the concept phase, I analyzed several existing projects that shared similar programmatic requirements. These sketches document my precedent research, focusing on how these reference buildings approached spatial layout, form, and context. Drawing these elements by hand allowed me to deeply understand the mechanics of each design.



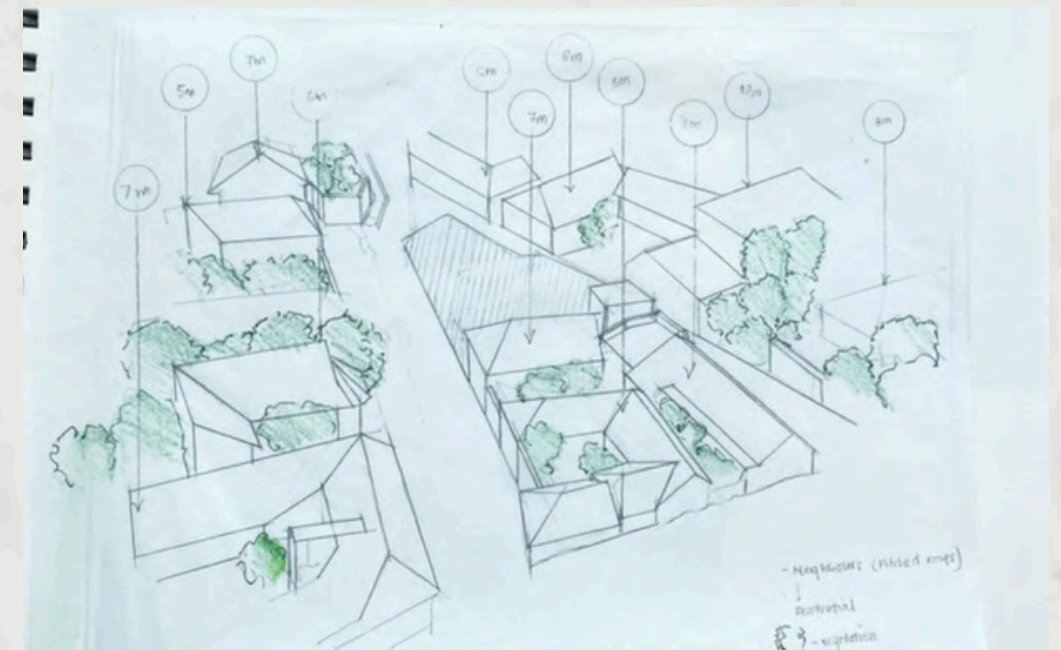
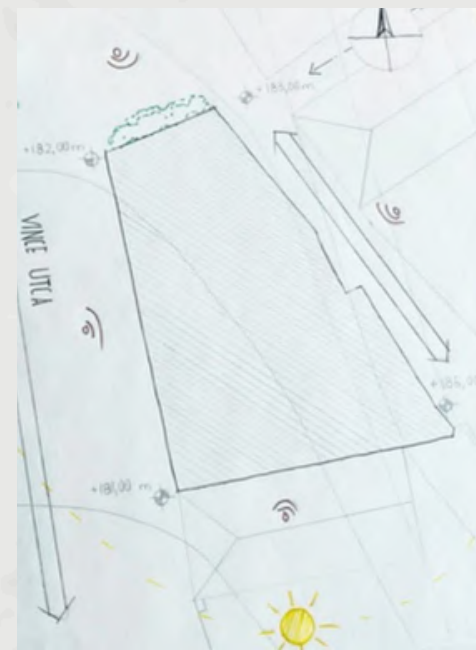
This process of visual deconstruction was essential for finding both inspiration and practical solutions. By breaking down the successes of these prior projects, I gathered a toolkit of architectural strategies that guided my decision-making as I began shaping my own concept.

07 / SKETCHES

Continuing with the site and context sketches, this phase focused on analyzing the terrain and adjacent structures through sectional drawings. Understanding the topography was a critical step; these site sections clearly dictated how the building mass should anchor into the landscape. Furthermore, they provided valuable insights into where fenestration and openings could be optimally placed in relation to the surrounding buildings.

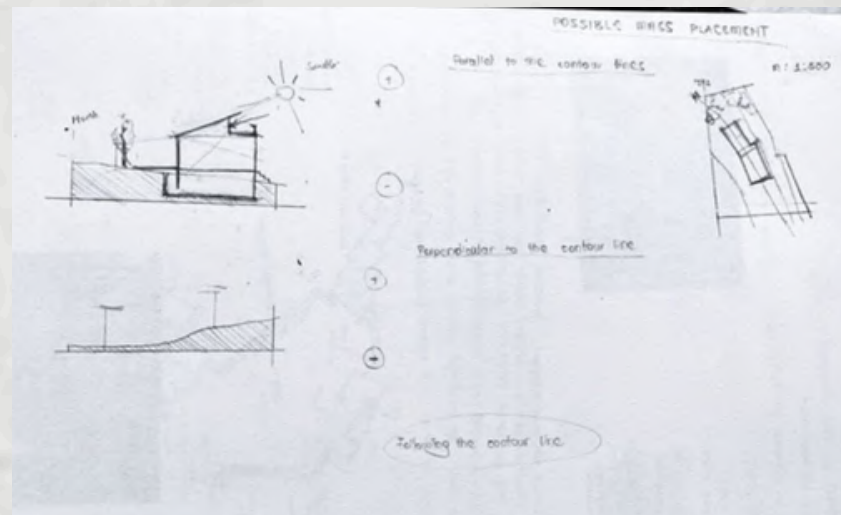
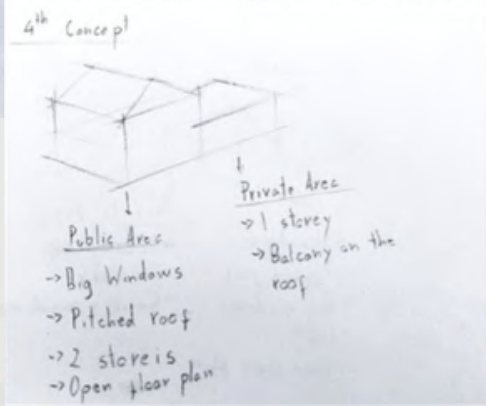
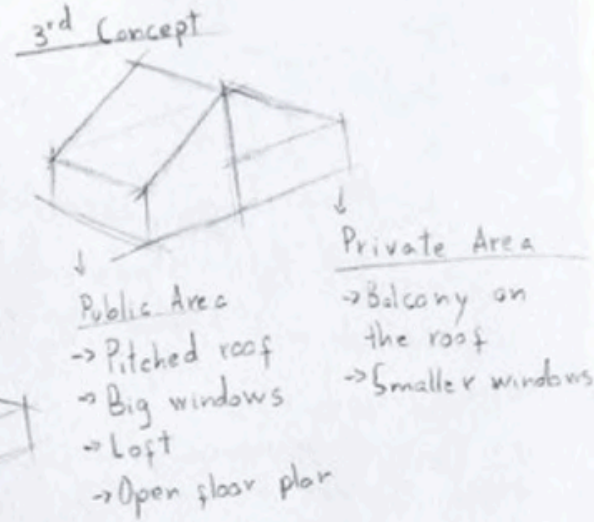
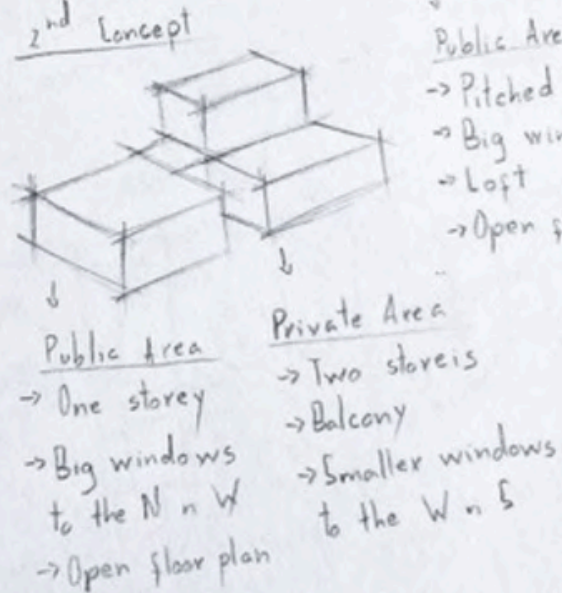
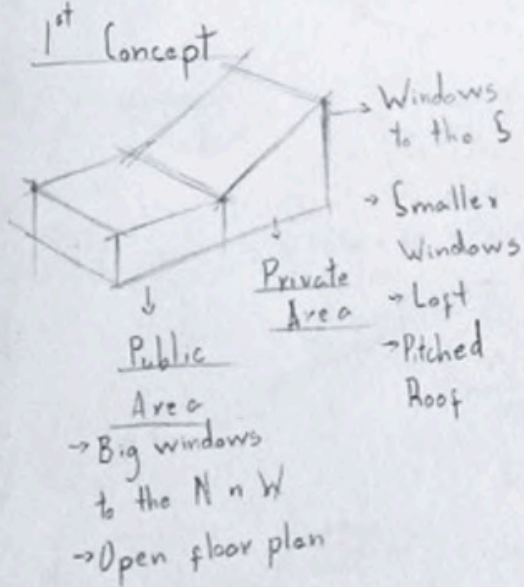


The visuals above present the preliminary sectional studies, exploring the initial vertical spatial organization. Below, the early site analysis is accompanied by a 3D contextual view, which was crucial for evaluating the scale and heights of the neighboring structures.

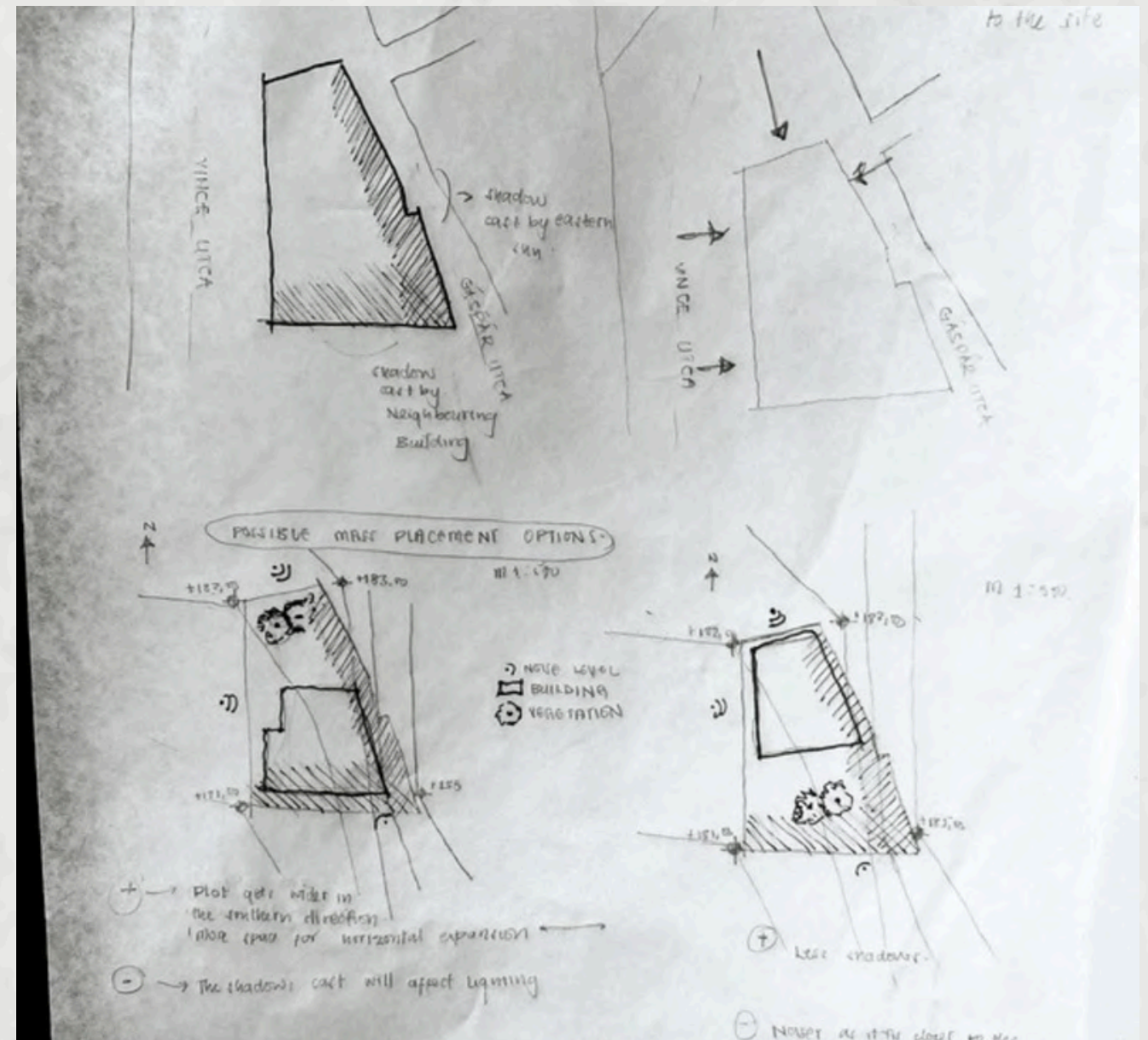


CONCEPTS

Art Workshop And Showroom



In this final exploratory step, the architectural concept begins to crystallize. The focus shifts to form-finding, testing various shapes and strategic site positioning. By iterating through these physical volumes, I was able to determine the building's overall footprint, as well as how deep it could integrate into the terrain and how high it should rise.



Several conceptual iterations were sketched and evaluated to ensure the strongest design direction was selected for further development.

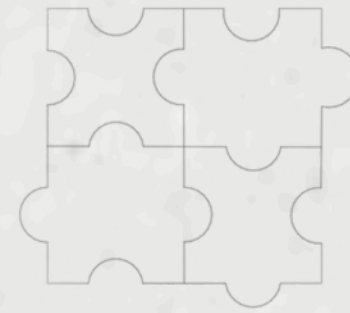
08 / KINDERGARTEN PROJECT

This three-story kindergarten is formed by four interlocking puzzle-shaped volumes, each dedicated to learning, play, rest, sports, and service. The playful geometry enhances natural light, circulation, and spatial clarity while symbolizing each child as a unique piece of the whole. Our aim is to design a space where children feel safe, inspired, and free to explore. Through creativity and thoughtful design, we foster an environment where learning and imagination go hand in hand.

Being surrounded by roads, our main challenge was ensuring privacy. We solved this by placing the building at the center and surrounding it with trees and fences. The puzzle-inspired form introduced curves and odd corners, which made furnishing harder—but also led to a more creative and fluid space.

Challenges and Responses

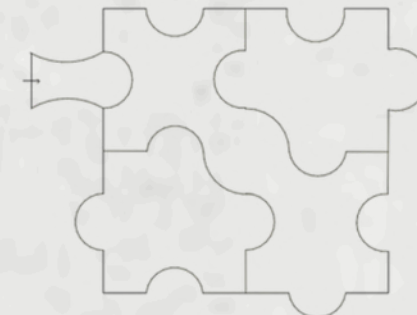
The Concept



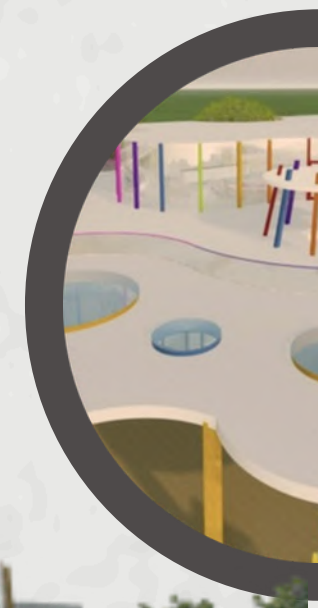
We have started with this easy shape with 4 pieces of a puzzle.



Then we added a circle in the middle to get rid of the negative corners

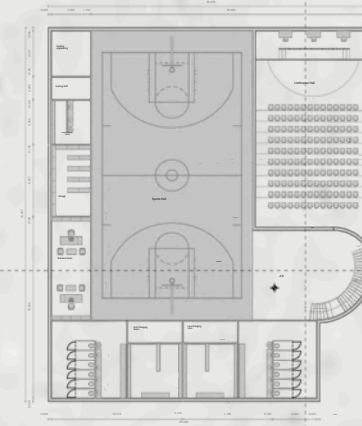


Finally we have this final layout for our floor plan

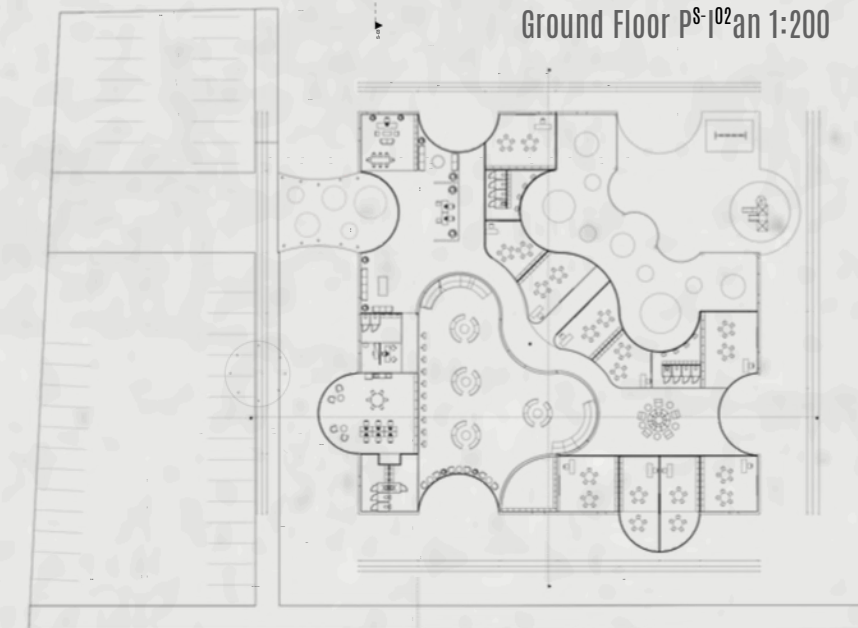


KINDERGARTEN PROJECT/ 08

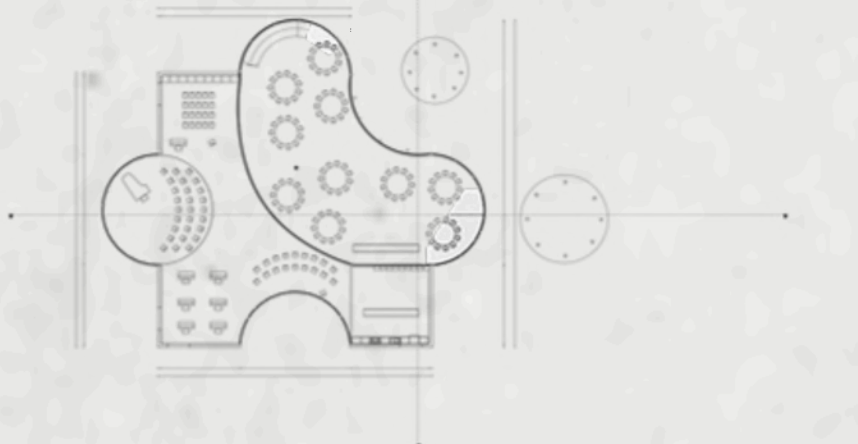
Below Ground Floor Plan 1:200



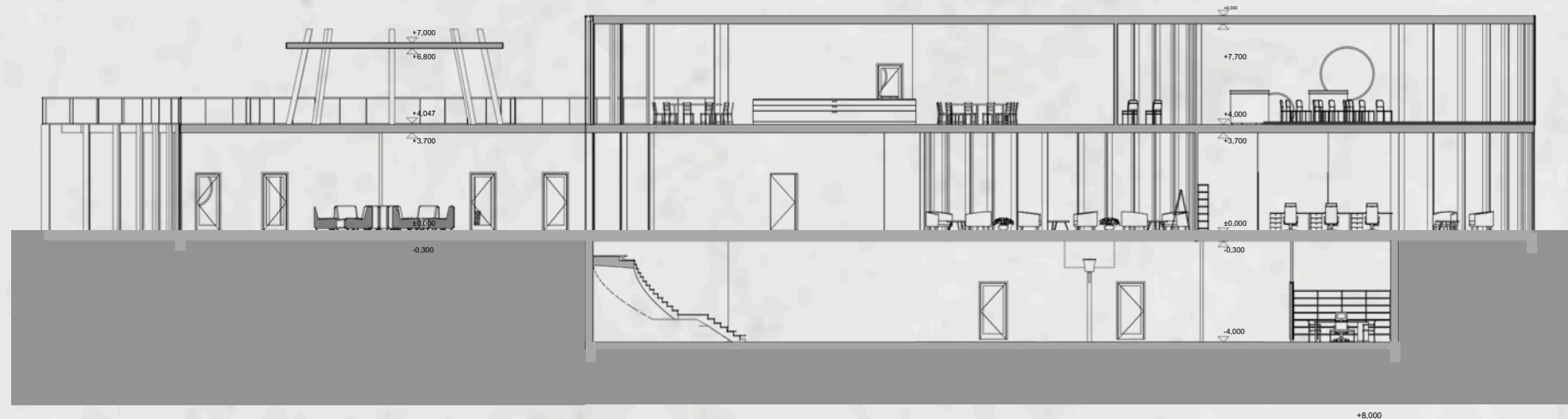
Ground Floor P^S-102an 1:200



First Floor Plan 1:200

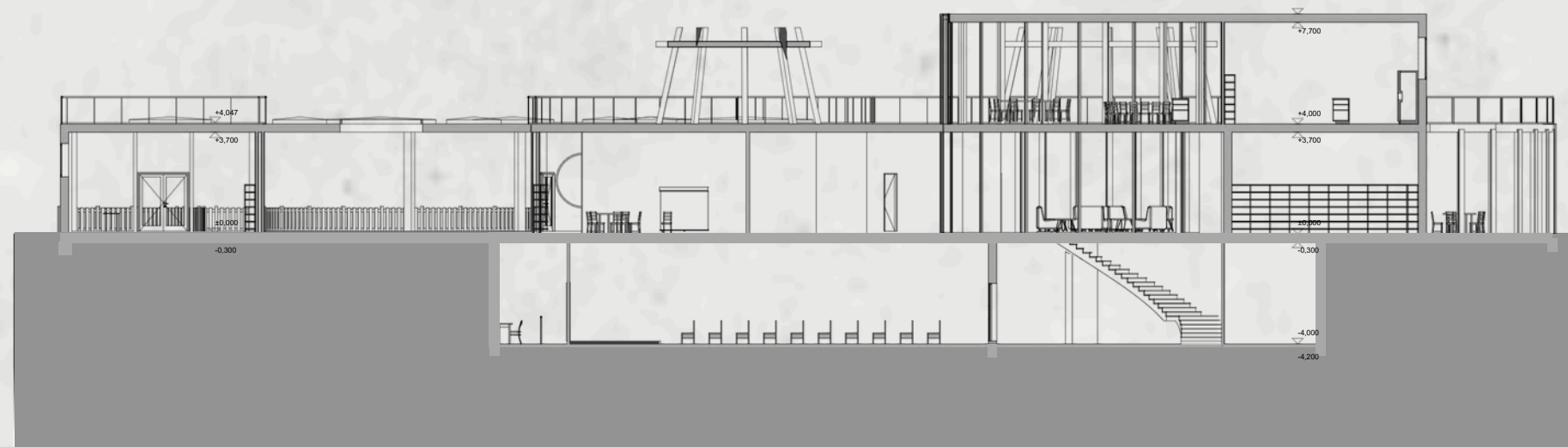


The kindergarten is distributed across three distinct levels, carefully zoned to optimize daily activities. The underground level houses the main sports hall, providing a dedicated, large-scale space for physical education.



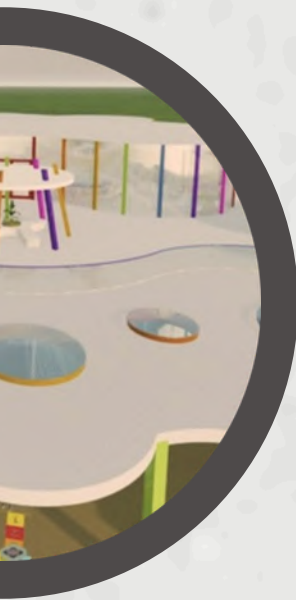
Section A-A

The ground floor serves as the primary educational and administrative hub; it features welcoming waiting lounges for parents, the main classrooms, a teachers' staff room, and direct access to an outdoor play area from the classes. There is a library which can be used for indoor gatherings. Lastly there is an outdoor parking for parents and the teachers.



Section B-B

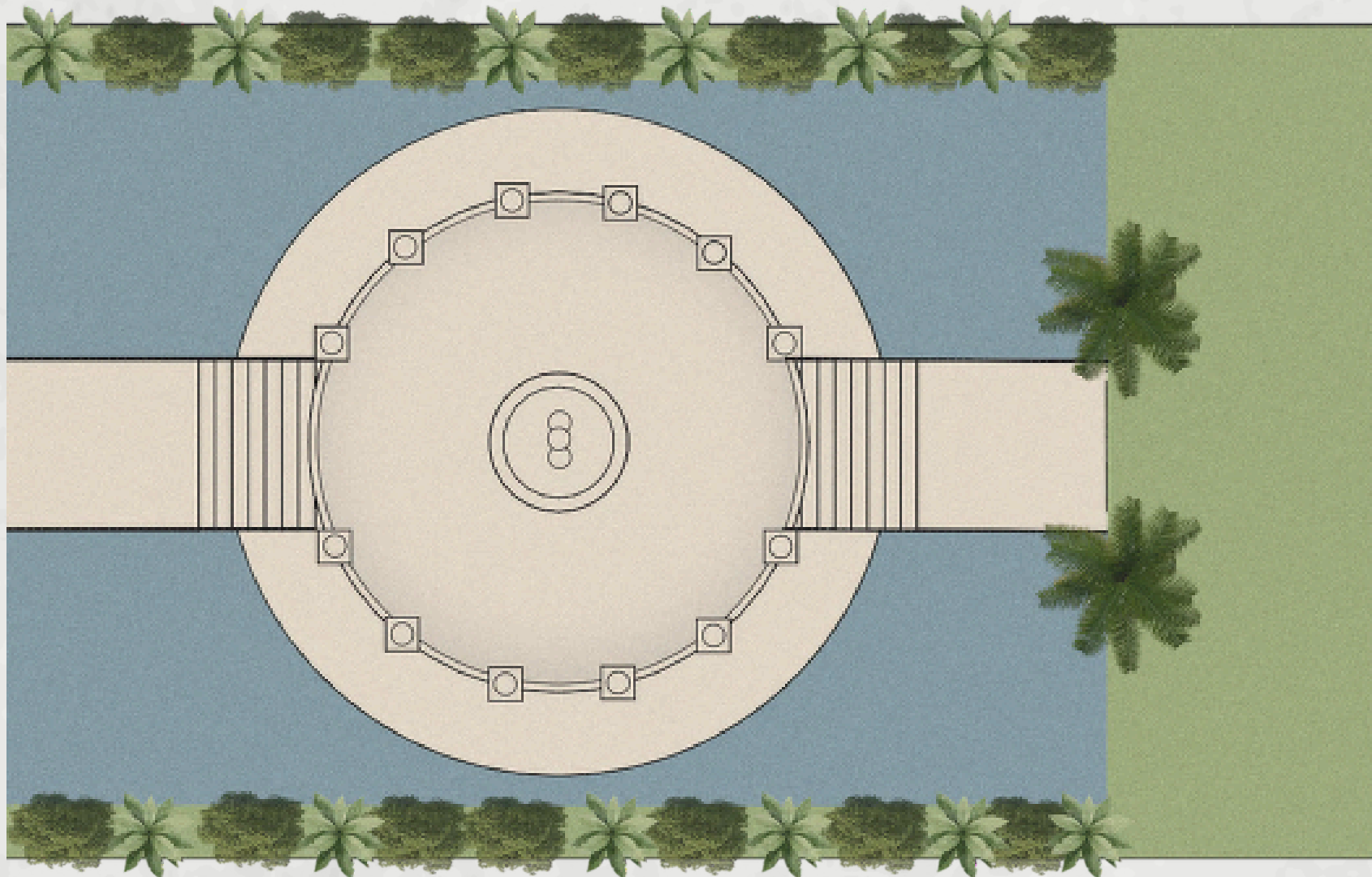
The first floor is designed for communal and creative engagement, containing a cafeteria, open-plan classrooms for music, and a versatile open terrace that accommodates play, socializing, and larger group gatherings.



09 /IVYRIA - OXPOU PAVILION

For this project, the task was to invent an entirely new country from scratch, rooting its existence in a rich background story and a unique founding myth. Building on this narrative, I developed a complete visual and geographical identity, which included designing a detailed map and a custom national flag. The final challenge was to translate this conceptual world-building into a physical space by designing an exhibition pavilion for a global expo. This structure serves as the country's official showcase, inviting visitors to step inside, explore its lore, and experience its culture through an immersive architectural journey.

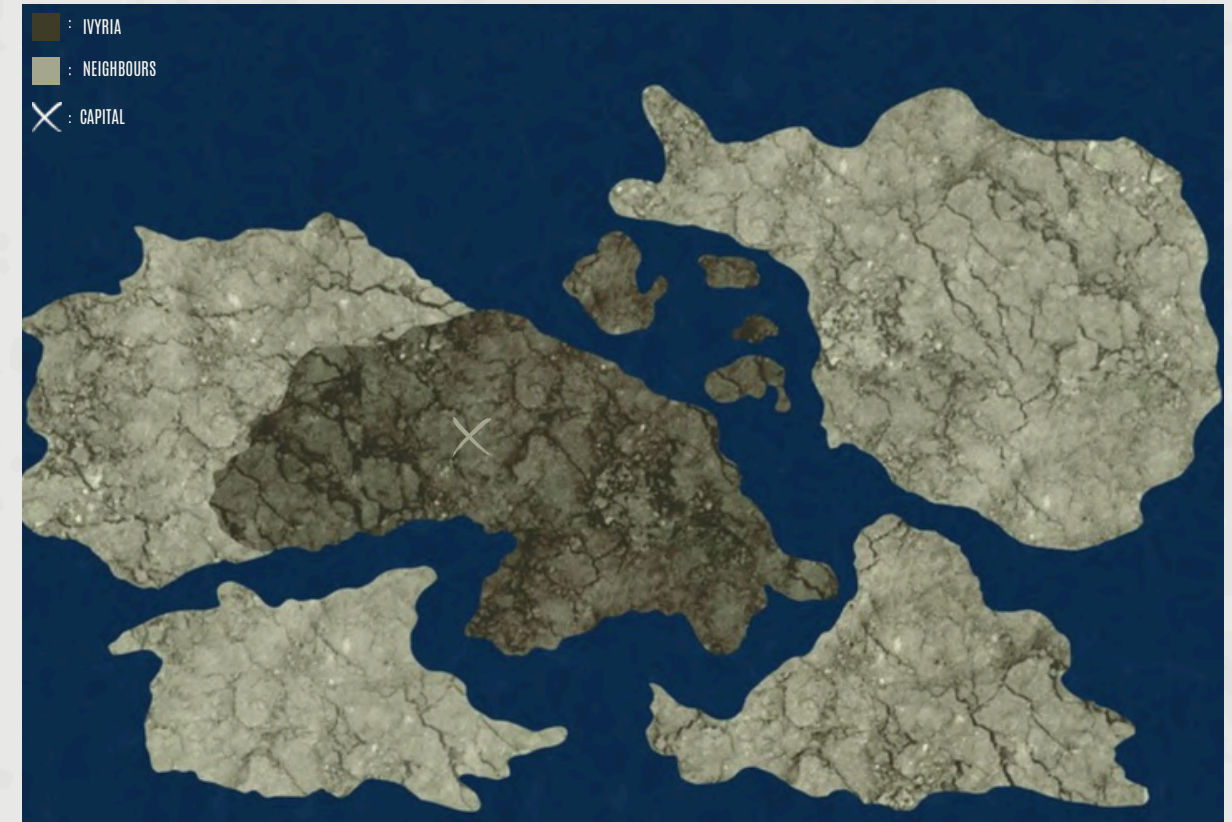
SITE PLAN



FLAG



MAP



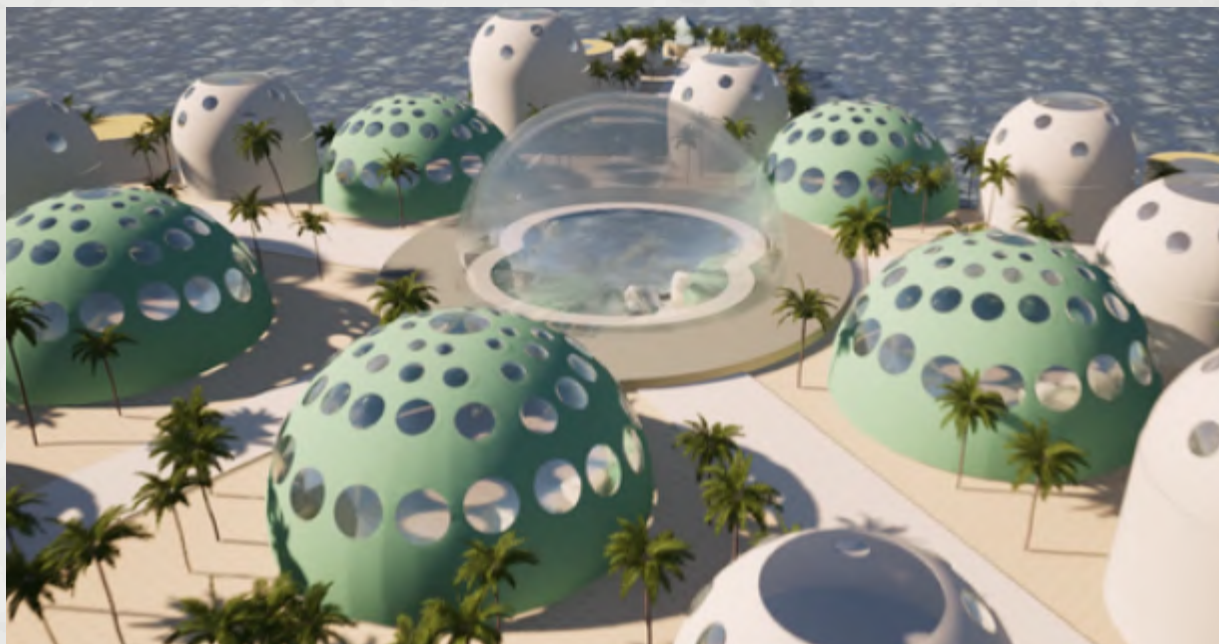
The pavilion's interior serves as a physical embodiment of Ivyria's deep-rooted culture and the sacred Heartleaf Covenant. Designed as a sunlit, biophilic sanctuary, the space is anchored by three massive, angled pillars that replicate the structural majesty of the Great Ivy Oak. Wrapped entirely in climbing green ivy, these central columns reach upward to support an expansive glass dome, creating a living canopy that filters natural light into dappled shadows across the floor.

Surrounded by a classic colonnade and transparent walls, the open layout offers panoramic views while maintaining a tranquil, sheltered atmosphere. This design seamlessly mirrors the story of Vinelis, where architecture and the natural world exist in perfect equilibrium. By stepping into this sunlit haven, visitors are invited to experience firsthand the enduring bond between the Ivyren people and the earth.



10 /COUNTRY CREATION

For this project, the task was to design an original country from scratch. To answer this brief, I created a unique island nation shaped like a giant starfish, designed to celebrate its close connection to the ocean. The island's architecture takes direct inspiration from its marine surroundings, featuring buildings designed to look like oversized seashells and glass domes. These structures are spread across the five arms of the starfish, connected by palm-lined walkways that meet at a central fountain.



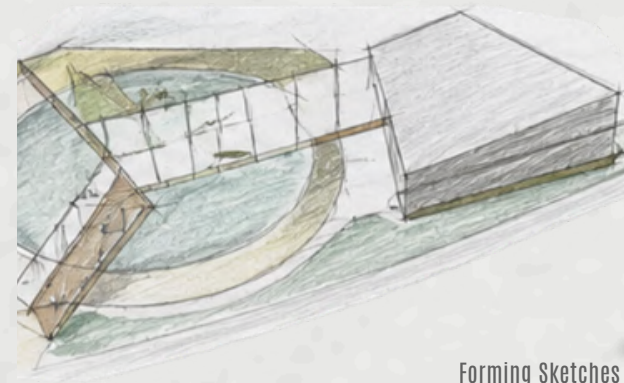
This layout ensures beautiful ocean views for everyone, perfectly balancing modern design with the natural environment. Ultimately, the result is a peaceful coastal haven that invites inhabitants to live in harmony with the sea.



Check out the animation above for a closer look at the island's design details. The video provides a full flyover, showing how the glass domes and seashell structures create a seamless, nature-inspired living environment.

11 /CIVIC CENTER

This civic center is a short task for an urban planning course. For most of the class, the focus is on understanding the neighbors and the area. This task focuses on creating an outstanding yet fitting building for the area.



Forming Sketches

Ground Floor Plan



First Floor Plan



Second Floor Plan



The building is formed from two different masses connected with a ridge on the second floor. The functions are: multifunctional classrooms, restaurant, lounges, and event halls. In the picture above, the building on the left mainly focuses on events, and the one on the right is for classes and a restaurant. While the bridges connect the building, they also serve as a social hub.



12 /INDIVIDUAL POSTERS

These posters are short tasks assigned in different courses, from interior design to design studio. My goal here is to show that, beyond the projects we had, we also had the opportunity to develop and express our own perspectives of design topics.



COLOR

The color is light, beauty and harmony, but also mental balance, comfort and excitement. Colors in Architecture are necessary to embellish, highlight, illuminate and separate spaces and also to transmit sensations and comfort.

The color of a building is like the presentation of a product and acts as stimulus care to create a first impression, favorable or negative. The interior colors influence our body, character, behavior, and mood.

KOZARMISLENY CIVIC CENTER/

Situated in Kozarmisleny, this project is driven by detailed site and SWOT analyses. The proposal creates a multifunctional community hub that bridges the rural-urban divide while respecting local preservation constraints. To achieve this, the civic center utilizes a minimal, modern aesthetic anchored by natural materials like honey oak wood and stone. These warm elements, combined with solid reinforced concrete structural details, ensure the building is both contextually sensitive and visually enduring.



Strengths

- Pécs proximity
- Mild climate
- Cultural heritage
- Developed infrastructure
- Natural resources

Weaknesses

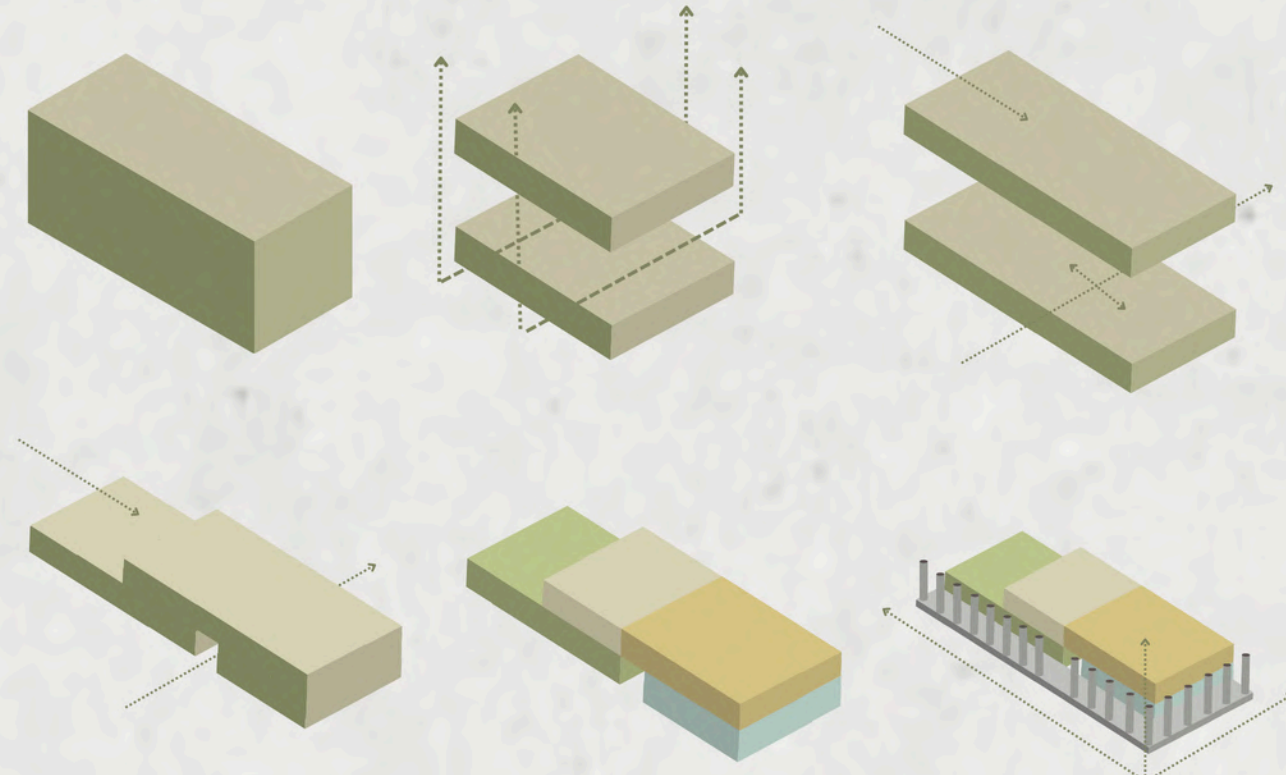
- Limited land
- Economic dependence
- Preservation constraints
- Rural-urban divide
- Broadcasting mast

Opportunities

- Suburban expansion
- Tourism potential
- EU funding
- Population growth
- Sustainable design

Threats

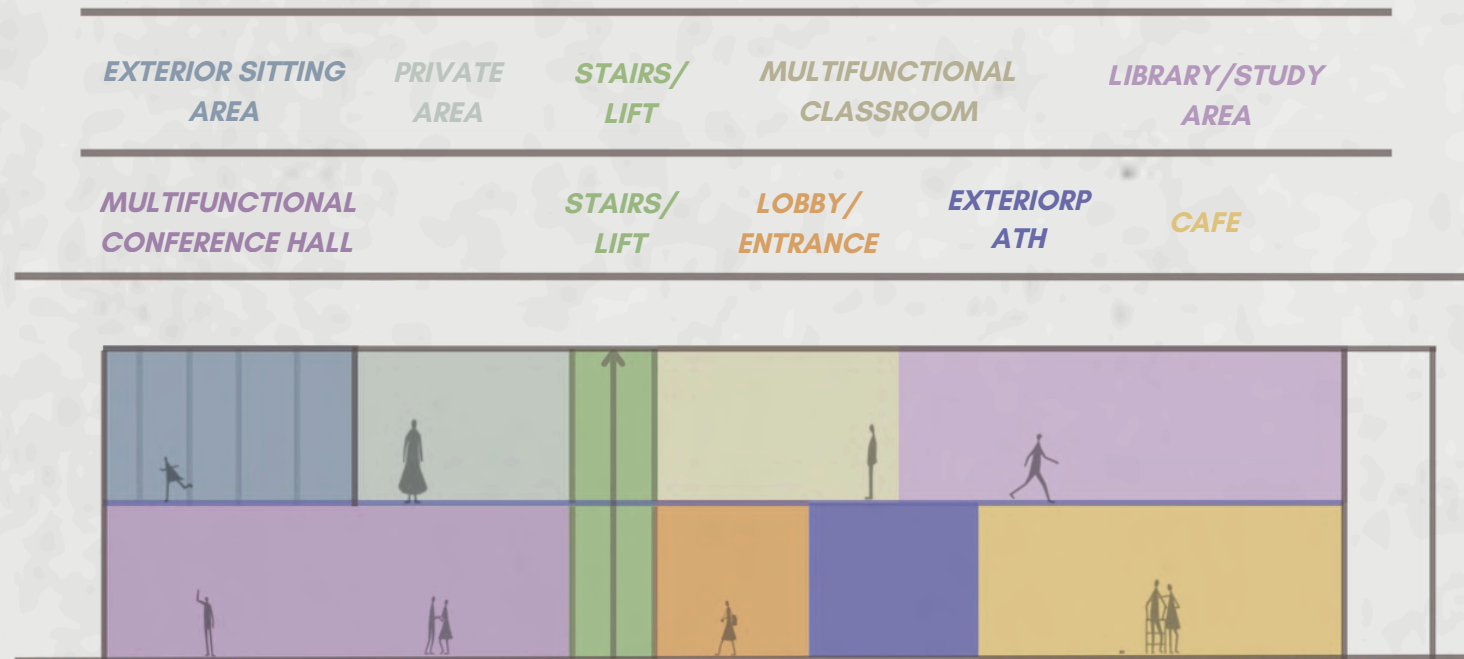
- Economic decline
- Population shrinkage
- Urban sprawl
- Social tensions
- Climate variability



The massing strategy responds directly to the surrounding conditions, with the initial architectural volume carefully established to accurately reflect the specific site boundaries. From this foundational footprint, the volume is strategically fragmented and shifted to optimize solar exposure, defining clear functional zones while creating a welcoming, permeable public edge.

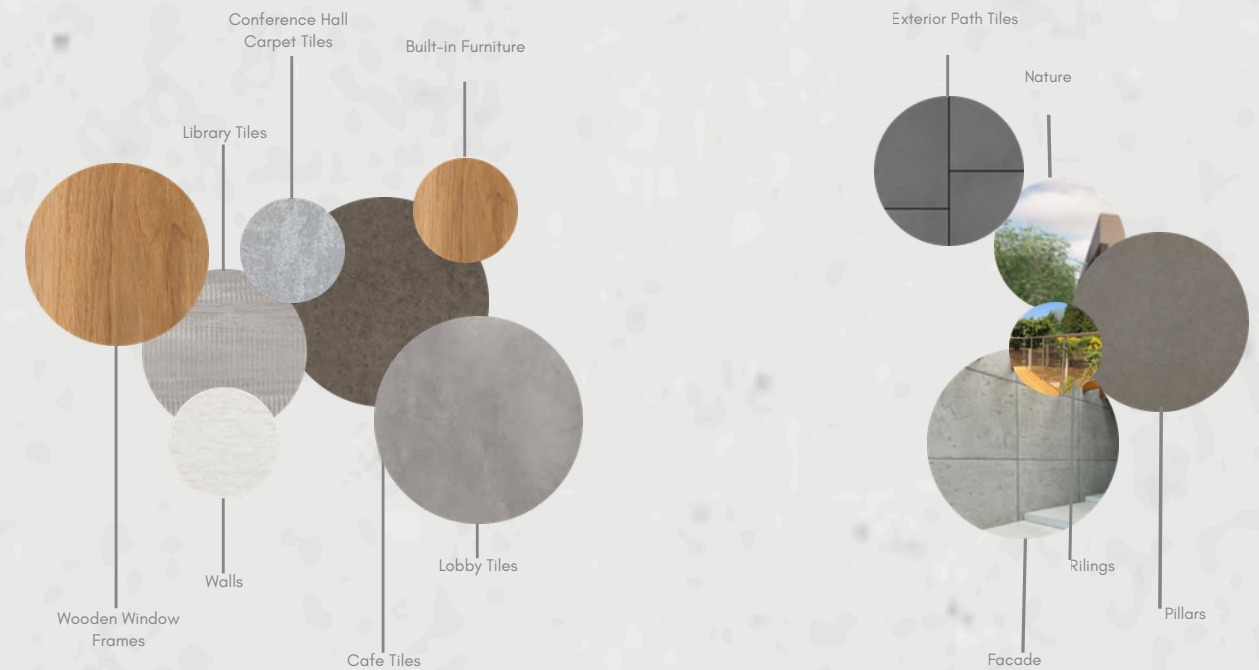
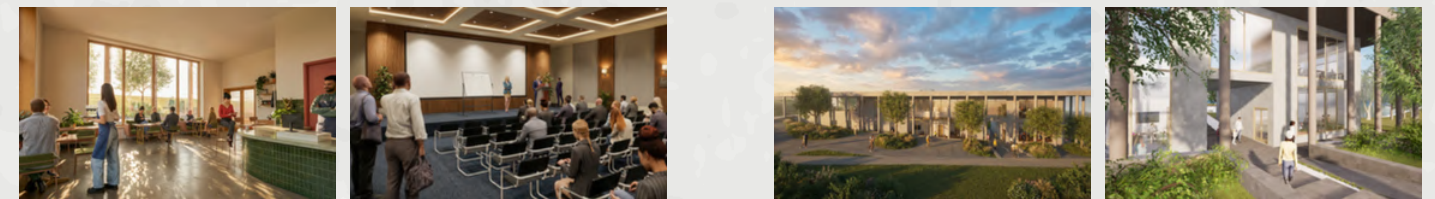
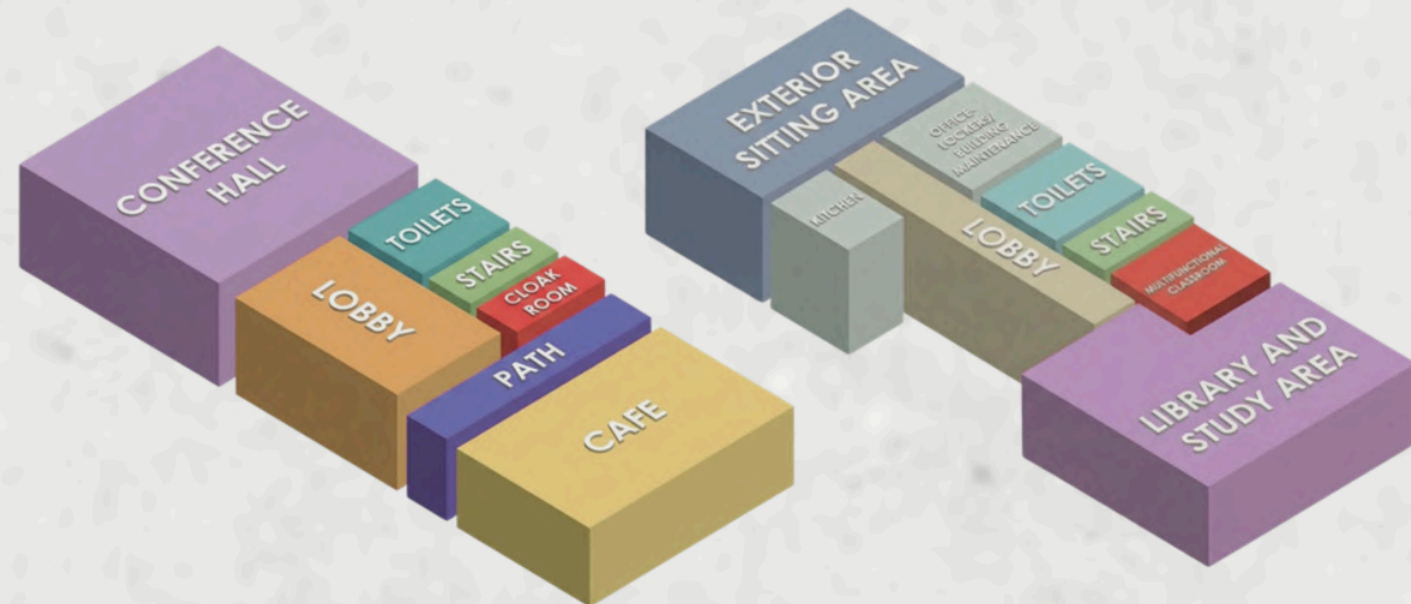
13 / KOZARMISLENY CIVIC CENTER

The spatial organization of the civic center revolves around a dynamic central lobby that acts as a transition point between primary functions. By categorizing spaces into distinct volumetric blocks—such as the expansive conference hall, the interactive cafe, and the focused library area—the design creates a legible hierarchy. These spatial diagrams illustrate how public and private zones are distributed across different floors, ensuring efficient circulation and distinct atmospheres.



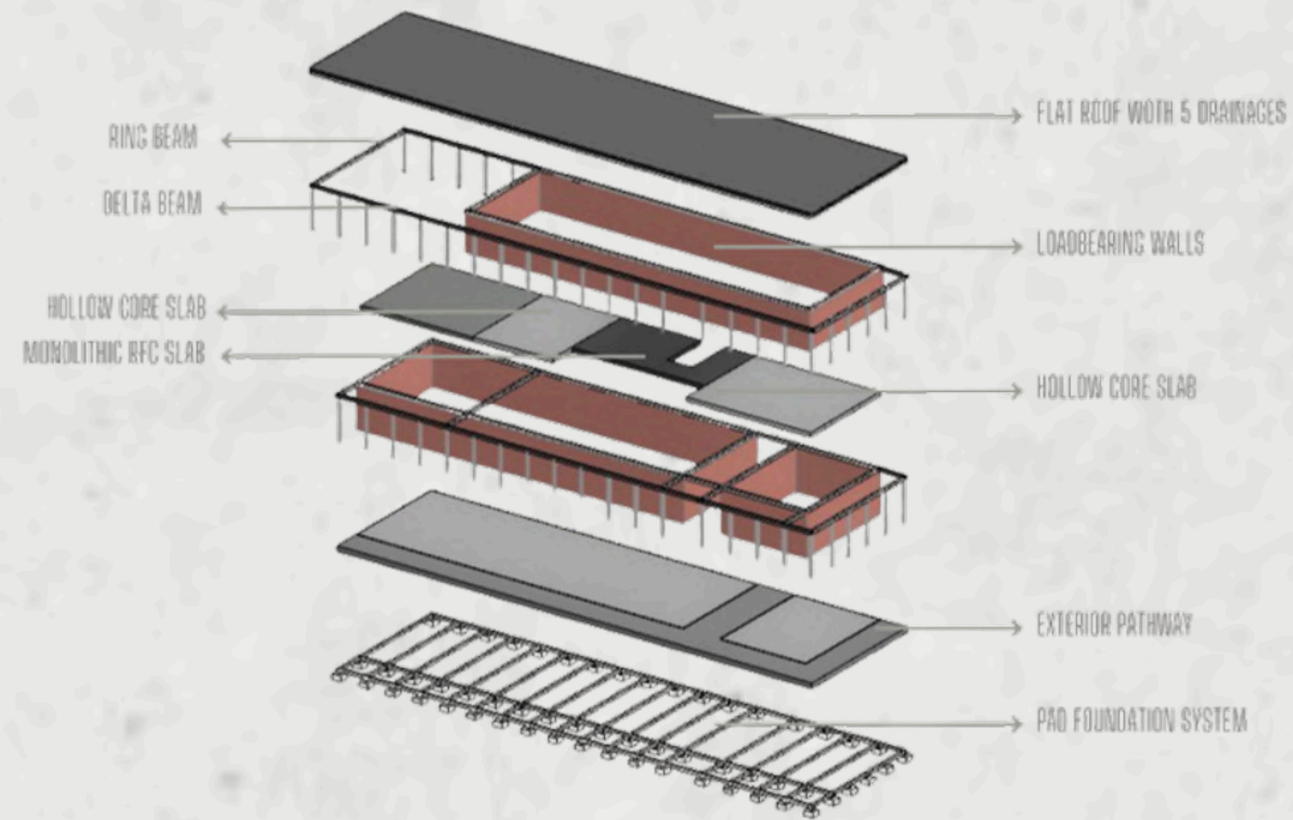
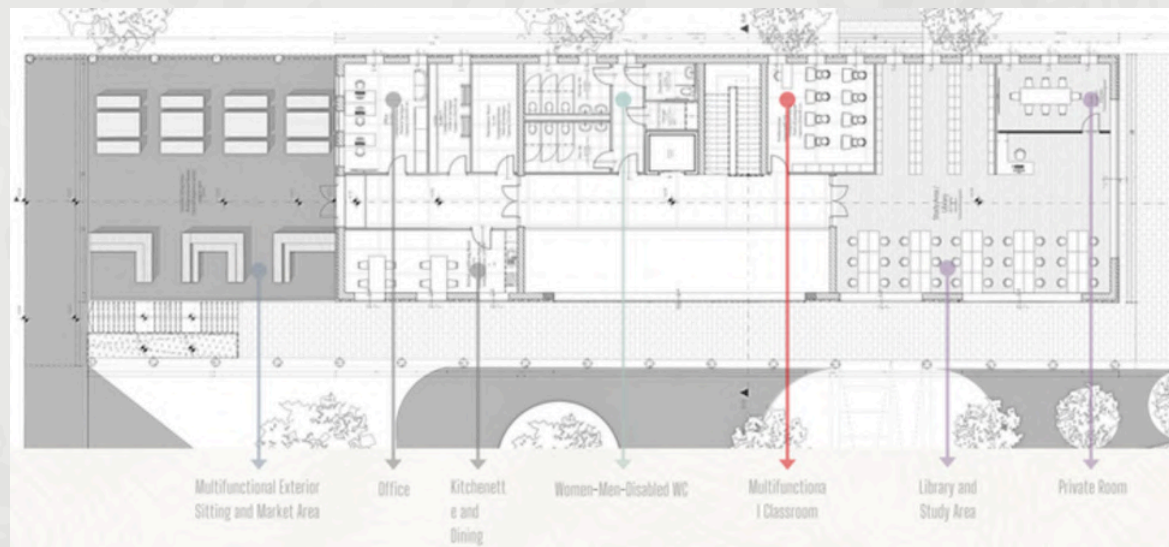
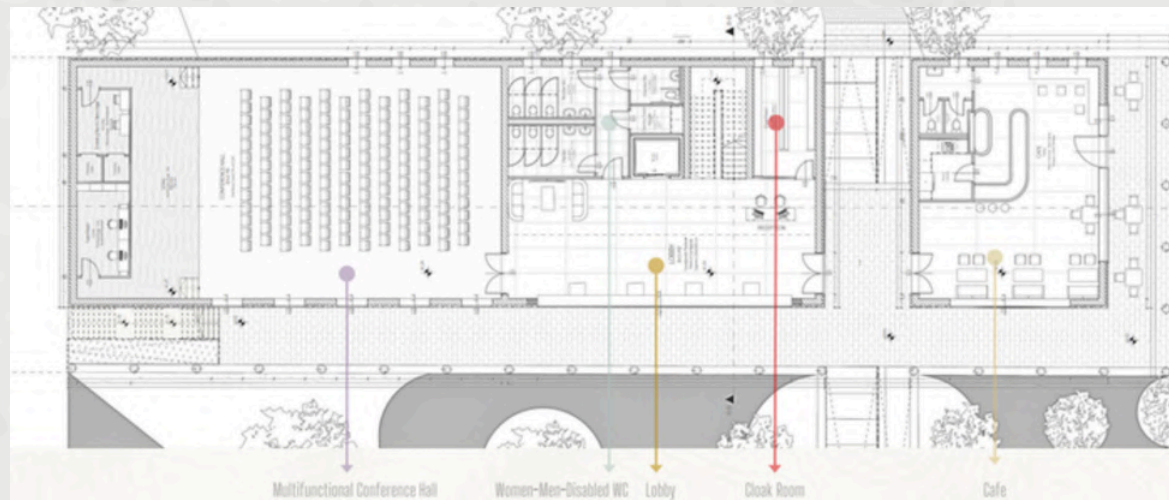
GROUND FLOOR

FIRST FLOOR

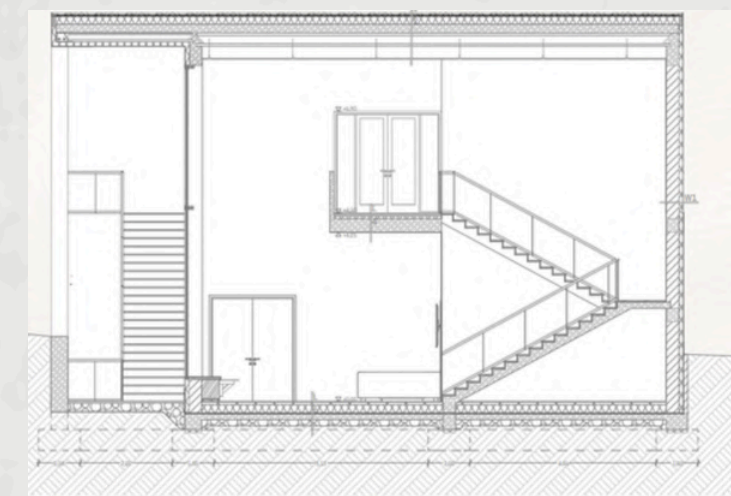


The material palette was carefully selected to evoke a sense of warmth and civic dignity. Interior spaces feature a blend of natural oak finishes, acoustic carpet tiles, and exposed concrete to balance aesthetics with acoustic performance. Externally, the facade incorporates durable concrete panels complemented by natural stone pathways, grounding the building in its environment while large wooden frames blur the boundary between interior and exterior.

The Kozarmisleny Civic Center is designed as a core community hub. Its linear layout systematically organizes public functions, placing high-traffic zones like the conference hall and cafe on the ground floor to optimize accessibility, daylighting, and overall circulation.



The structural system combines load-bearing walls on a pad foundation with monolithic concrete and hollow core slabs. This exploded axonometric illustrates the assembly of these structural layers and the flat roof drainage.



13 / KOZARMISLENY CIVIC CENTER

Interior renders



KOZARMISLENY CIVIC CENTER/ **13**
Exterior Renders



14 /SİNCAPKÖY ŞİLE VILLA COMPLEX

This is my first project after graduation, aimed at designing a villa complex in Istanbul,Turkiye. The development includes 62 individual villas, categorized into 7 different types.

Type A: Single triplex villa with a pool

Type B: Twin triplex villas

Type C: Twin doublex villas

Type D: Twin loft villas

Type E: Triplet loft villas

Type F: Twin loft villas



Type-A Triplex Villa



Type-A Triplex Villa

The project is new, so we have only exterior renders and the site plan. The interior is not done yet

SİNCAPKÖY ŞİLE VILLA COMPLEX/ 14

The name Sincapköy means "squirrel villages." The concept revolves around creating a social living space primarily for families with children, but that doesn't mean people without children can't enjoy it. The complex is located on the forest side. The goal is to preserve the fresh, natural feel while creating a living space. Squirrel is the symbol for natural life, which is why the public open pool is shaped like one. There are social hubs such as a skating park, basketball court, amphitheater, workshops, adventure park, and central square.



Type B: Twin triplex villas - Entrance

Type D: Twin loft villas - Entrance

Type E - Triplet Loft Villas - Entrance



Azra Tuna
2022-2026